

Compression  
Garment  
Collection



CAROMED®  
recover beautifully



# Quality

As the first post-surgical garment manufacturer, Caromed has defined industry standards for excellence and integrity. Today, our garments are available in new, elegantly designed styles that allow you to recover in comfort—and recover beautifully.

Throughout our history, we've earned a proven reputation for producing superior medical-grade compression garments with unmatched dedication and exacting attention to detail. We have evolved from offering a few select garments, to being a market leader with an extensive array of elite products for cosmetic and reconstructive patients around the world.

All Caromed garments are produced in North Carolina using world-class fabrics from the finest mills throughout the U.S. Each is selected only if it meets our stringent guidelines for medical-grade compressive properties that satisfy scrupulous physician and patient needs. We use only the best available zippers, hook & eye closures and elastics which is why we meticulously cut, sew and produce each garment with accuracy and care.

Caromed's dedication comes from putting our hearts into making sure every garment measures up to a level of excellence medical professionals and patients have come to expect. More than anything, every Caromed garment is designed to assure you can recover in style, so you can feel beautiful about the new you.

# Table of Contents

---

## HEAD AND NECK COLLECTION

1-8006	Chin-Neck Garment	1
1-8007	Full Face Garment	2
1-8018	Therma-Jaw Garment with Gel Packs	3
1-8026	Face Lift Garment	4
1-8201	Head-Neck Garment	5

## ARMS COLLECTION

5-8030	Vest Style Arm Garment	7
5-8035	Bolero Style Arm Garment	8
5-8040	Arm Compression Sleeves	9

## BREAST AND CHEST COLLECTION

2-8002	Shaped Compression Vest	11
2-8014	Compression Vest	12
2-8015	The Bandeau – Standard Design (Double Bandeau)	13
2-8015CAR	The Bandeau	14
2-8020	The Bandeau – One Size Fits All (3” Wide)	15
2-8024	Post-Augmentation Bra/Bandeau	16
2-8120	SofShape™ Breast Augmentation Bra	17
2-8124	Post-Augmentation Bra	18-19
2-8125	Semi-Shaped Cotton Bra	20
2-8126	Semi-Shaped Satin Bra with Velcro® Straps	21
2-8126ELC	Reconstruction Sports Bra with Drain Pouches	22
2-8127	Semi-Shaped Cotton Bra with Velcro® Straps	23
2-200	First Impression Bra (by AAdvantage)	24
2-500	First Choice Bra (by AAdvantage)	25
SC-410	Sculptures SuperSilky Compression Bra	26
SC-415	Sculptures Lace Surgical Bra	27
SC-475	Sculptures Sports Bra w/ Sleeves	28
SC-480	Sculptures Female Bra Vest	29
SC-495	Sculptures Female Bra Vest w/ Sleeves	29

## UNISEX WAISTBINDER COLLECTION

Waistbinder Measuring Instructions		31
3-8004/3-8504	Unisex One-Piece Waistbinder	32-33
3-8027/3-8547	Unisex Multi-Flap Waistbinder	34-35



## GIRDLE AND COMPRESSION SUIT COLLECTION

Girdle and Compression Suit Measuring Instructions	37
3-8005 Female Abdominoplasty Garment	38
3-8025 Adjustable Abdominoplasty Garment	39
4-4000 Powerknit Suspended Girdle	41
4-4700 Powerknit Suspended Brazilian Lift Garment	43
4-8000 Powerknit Girdle	45
4-8200 Abdomino/Lipo Combination Girdle	46
4-8500 Satin Girdle	47
SC-25 Sculptures Stage 1 Abdominoplasty Body Shaper	48
SC-25F Sculptures Stage 1 Abdominoplasty Body Shaper w/zipper	49
SC-250/SC-255 Sculptures Stage 1 Body Shaper	50
SC-26/SC-265 Sculptures Stage 1 Body Shapers w/sleeves	51
SC-200 Sculptures Stage 1 Abdominoplasty Girdle	52
SC-210/SC-219 Sculptures Stage 1 Girdles	53
SC-220/SC-225 Sculptures Stage 1 Girdles	54
SC-230/SC-235 Sculptures Stage 1 Girdles	55
SC-240/SC-245 Sculptures Stage 1 Strapped Girdles	56
SC-310 Sculptures Stage 1 High Back Strapped Girdles	57
SC-290/SC-295 Sculptures Stage 1 Brazilian Body Shapers	58
SC-320/SC-325 Sculptures Stage 1 High Back Brazilian Body Shapers	59
SC-28/SC-285 Sculptures Stage 2 Girdles	61
SC-27/SC-270 Sculptures Stage 2 Body Shapers	63

## MALE GARMENT COLLECTION

2-8003 Male Compression Vest	65
4-8100/4-8112 Male Compression Girdle	66
SC-100 Sculptures Male Compression Vest	67
SC-205 Sculptures Male Abdominoplasty Garment	68
SC-175 Sculptures Male Compression Shirt	69
SC-150 Sculptures Male Body Suit	71

## SURGICAL SUPPLIES

7-80XX Cold/Warm Gel Packs	73
7-85XX Surgical Panties	75
SC-810/SC-815 Sculptures Surgical Liposuction Foam	76

CAROMED®

Head and Neck  
Garment Collection

---



# Chin-Neck Garment

**1-8006**

Sizes: XS - XXL

## Head/Neck Sizing Chart

Size	Inches		Centimeters	
	Neck	Head	Neck	Head
XS	13	18	33	45.7
S	14	20	35.6	50.8
M	15	22	38.1	55.9
L	16	24	40.6	61
XL	17	26	43.2	66
XXL	18	28	45.7	71.1



## Features

Provides compression for the chin and upper neck.

- Soft, lightweight, breathable fabric
- 100% latex-free

## Ideal for

- Facial surgery
- Neck surgery
- Submental region surgery
- Mentoplasty and/or chin implants
- Ear or periaural procedures
- Oral and maxillofacial surgery

## Colors

Beige

## Fabrics

Tricot

# Full Face Garment

## 1-8007

Sizes: S - XL

### Head/Neck Sizing Chart

Size	Inches		Centimeters	
	Neck	Head	Neck	Head
S	14	20	35.6	50.8
M	15	22	38.1	55.9
L	16	24	40.6	61
XL	17	26	43.2	66

Custom sizes available.



### Colors

Beige

### Fabrics

Tricot

### Features

Provides comfortable compression for all areas of the face and neck, but not the ears.

- Lightweight, soft, breathable fabric
- 100% latex-free

### Ideal for

- Facial surgery
- Rhytidectomy and dermabrasion procedures
- Malar implant surgery
- Pediatric facial surgery



# Therma-Jaw Garment

**1-8018**

Sizes: S - XL



## Head/Neck Sizing Chart

Size	Inches		Centimeters	
	Neck	Head	Neck	Head
S	14	20	35.6	50.8
M	15	22	38.1	55.9
L	16	24	40.6	61
XL	17	26	43.2	66

Custom sizes available.

## Features

All of our gel packs allow for immediate cold therapy, and can also be conveniently heated for warm therapy.

- Lightweight, soft, breathable fabric
- Bilateral pockets of soft fabric securely hold the gel packs in place
- 100% latex-free

## Ideal for

- Cold/Warm therapy
- Temporomandibular joint surgery or disease
- Craniofacial surgery
- Orthognathic procedures
- Rhytidectomy, parotidectomy surgery
- Oral and maxillofacial surgery
- Pediatric facial surgery

## Colors

Beige

## Fabrics

Tricot



# Face Lift Garment

**1-8026**

Sizes: XS - XL



## Head/Neck Sizing Chart

Size	Inches		Centimeters	
	Neck	Head	Neck	Head
XS	13	18	33	45.7
S	14	20	35.6	50.8
M	15	22	38.1	55.9
L	16	24	40.6	61
XL	17	26	43.2	66

Custom sizes available.

### Colors

Beige

### Fabrics

Tricot

### Features

Provides compression for neck, jaw, and ears.

- Lightweight, soft, breathable fabric
- Ear slits can be cut for added comfort without the fabric unraveling
- 100% latex-free

### Ideal for

- Facial surgery
- Rhytidectomy surgery
- Neck surgery
- Submental region surgery
- Mentoplasty and/or chin implants
- Ear or periaural procedures
- Oral and maxillofacial surgery
- Pediatric facial surgery

# Head-Neck Garment

**1-8201**

One size fits all



## Features

Upper band circles the head for added comfort and stability.

- Lightweight, soft, breathable elastic
- One size fits all
- 100% latex-free

## Ideal for

- Liposuction on submental region
- Rhytidectomy on submental region
- Scar revisions on submental region
- Pediatric facial surgery

## Colors

White

## Fabrics

Elastic

# CAROMED®

## Arm Garment Collection

---





# Vest Style Arm Garment

## 5-8030

Sizes: XS - 3XL

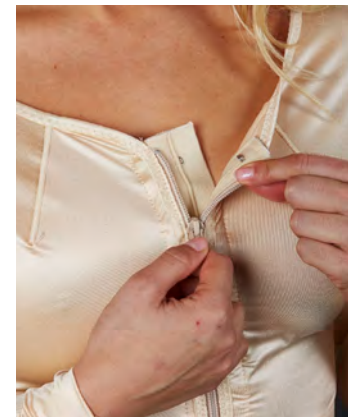
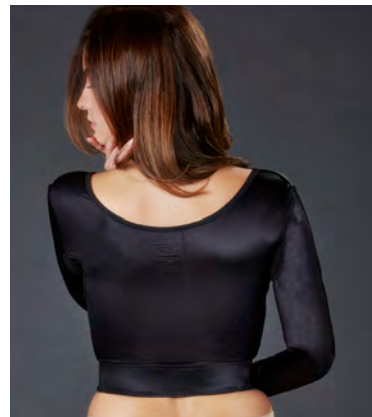
Arms



### 5-8030 Arm Sizing Chart

Size	Upper Arm	Elbow	Wrist	Nominal Length
XS	9.25-9.75	9.25-9.5	5.25-5.375	21.5
S	10-10.5	9.75-10	5.5-5.675	22
M	10.75-11.5	10.25-10.5	5.75-5.875	22.5
L	11.75-12.5	10.75-11	6-6.125	23
XL	12.75-13.5	11.25-11.5	6.1875-6.25	23.5
XXL	13.75-14.5	11.75-12	6.375-6.5	23.75
XXXL				

In inches



### Features

Includes graded compression from shoulder to wrist.

- Cotton fabric axilla coverage
- Front zipper closure for easy application
- Hook & eye closure behind zipper has a soft under padding
- 100% latex-free

### Ideal for

- Dermolipectomy
- Lipoplasty of the upper arms
- Lipoplasty of anterior and lateral axillary folds or rolls

### Colors

Black

Champagne

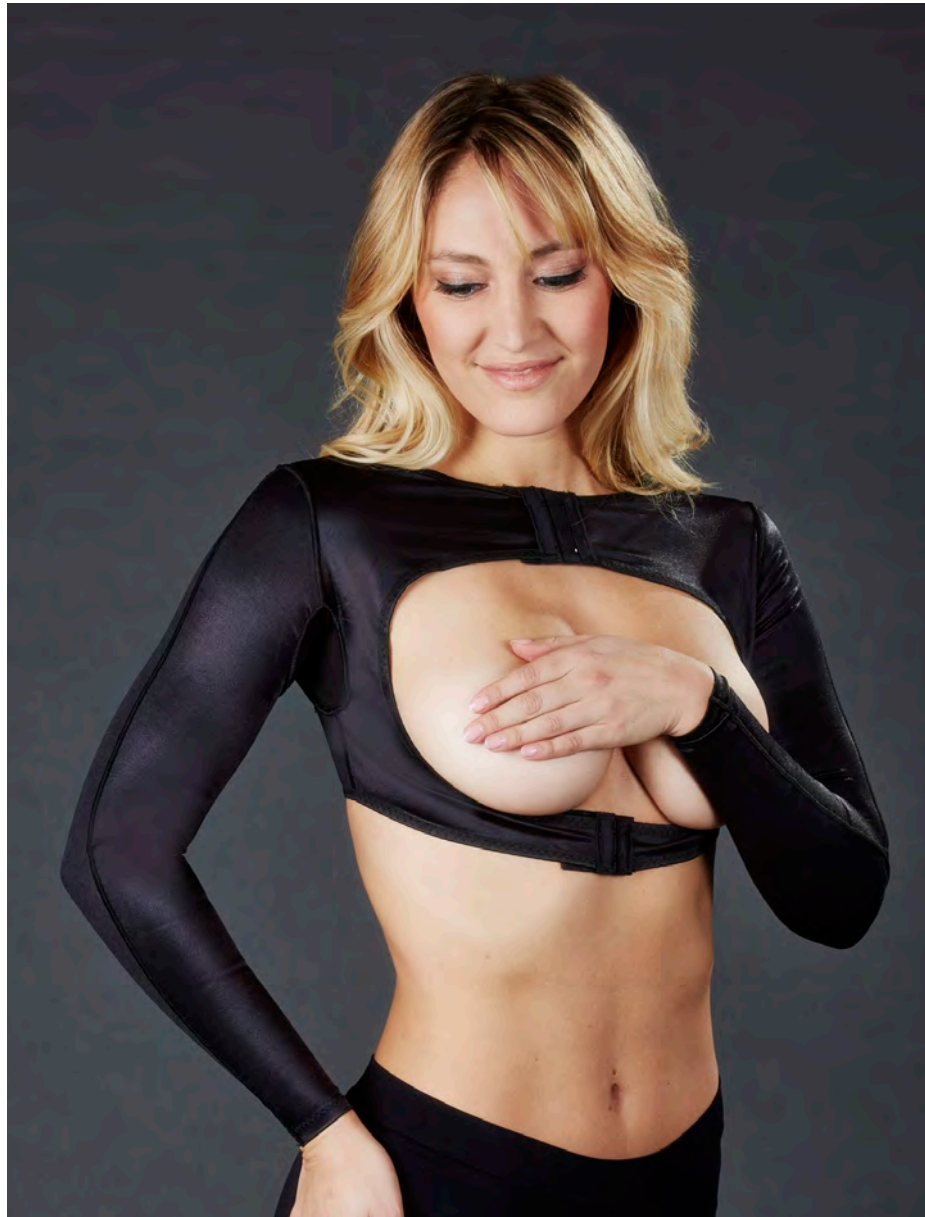
### Fabrics

Satin

# Bolero Style Arm Garment

## 5-8035

Sizes: XS - XXL



Size	Shoulder to Wrist	Mid-Upper Arm	Wrist
XS	17-18	8-9	4.5
S	19-20	9-10	5
M	21-22	10-11	5.5
L	22.5-23	11-12	6
XL	23.5-24	12-13	6.5
XXL	24.5-25	13-14	7

In inches

### Colors

Black

Champagne

### Fabrics

Satin

### Features

Focuses compression on arms only.

- Cotton axillary and outside seams for greater comfort
- Full back for greater stability and comfort
- Attaches with hook and eye closures across the chest, with a soft under padding
- Graded compression from shoulders to wrists
- 100% latex-free

### Ideal for

- Dermolipectomy
- Lipoplasty of the upper arms
- Lipoplasty of anterior and lateral axillary folds/rolls



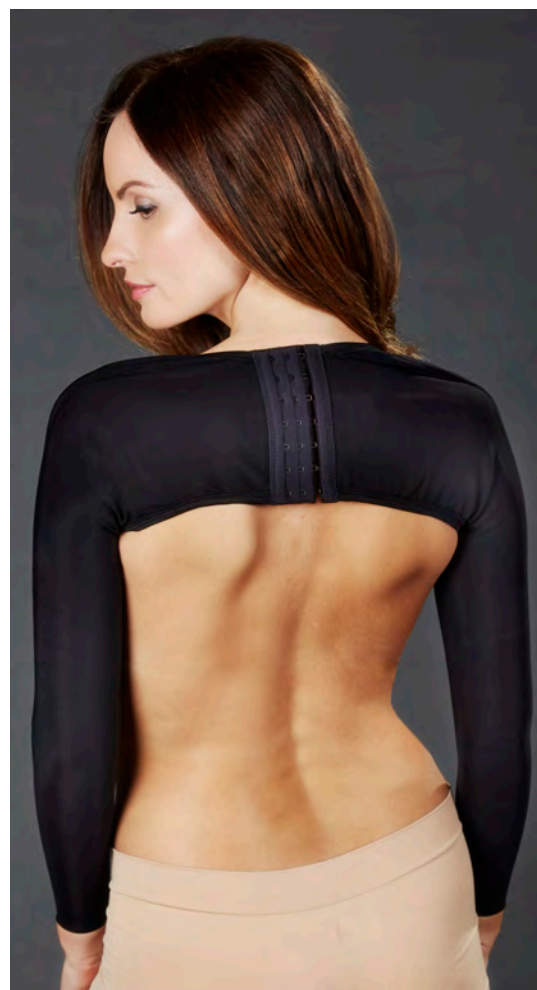
# Arm Compression Sleeves

Arms

## 5-8040

Sizes: XS - 3XL

3x only available in beige



### Features

- Breathable, self-wicking SuperSilky fabric
- Adjustable hook & eye closure in the back
- Seam on top of the arm to avoid interference with surgical site

### Ideal for

- Liposuction of the arm and elbow
- Arm lift procedures.

### Colors

Black

Champagne

### Fabrics

SuperSilky

Surgical Bras, Female Bra Vests and Arm Support							
	X-Small	Small	Medium	Large	X-Large	2X-Large	3X-Large
Chest (in.)	30 - 32	32 - 34	36 - 38	40 - 42	44 - 46	48 - 50	51 - 54
Bicep (in.)	9.5	10	11	12	13	14.5	16

# CAROMED<sup>®</sup>

## Breast & Chest Garment Collection

---





# Shaped Compression Vest

**2-8002**

**2-8002OS**

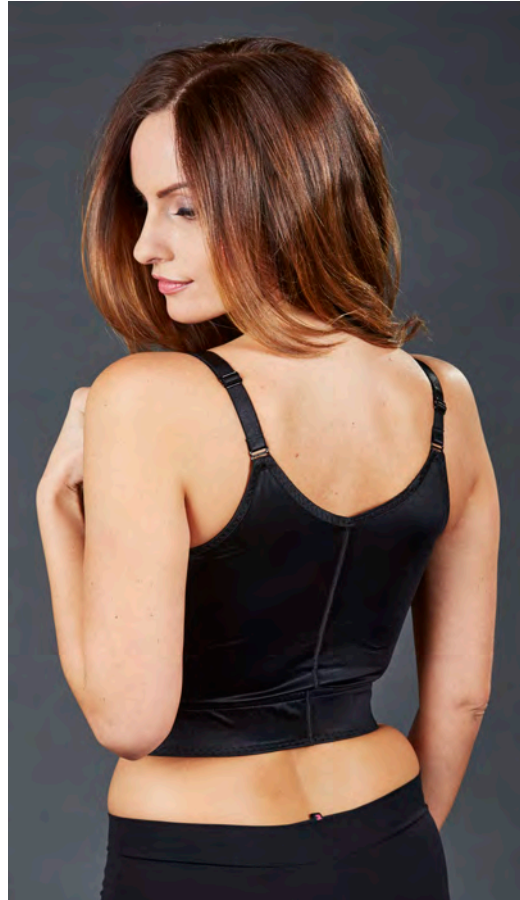
Black - Sizes 32 - 44

Champagne - Sizes 32 -48

OS style only available in Champagne



**2-8002**



**2-8002**



**2-8002OS**

## Features

Caromed's shaped compression vests are made from a soft, satin fabric that closely resembles the look and style you enjoy with your everyday undergarments.

- Slightly contoured cup area
- Front detachable straps (OS style features wide recloseable velcro shoulder straps)
- Front zipper closure for easy application
- Hook & eye closures behind zipper have a soft under padding
- 100% latex-free

## Ideal for

- Breast reduction
- Breast reconstruction

## Colors

Black

Champagne

## Fabrics

Satin

# Compression Vest

## 2-8014

Sizes 30-46

### Chest Sizing Chart

Inches	Centimeters
34	86.4
36	91.4
38	96.5
40	101.6
42	106.7
44	111.8
46	116.8
48	121.9



### Colors

Champagne

### Features

Caromed's compression vests are expertly crafted from soft, breathable Powerknit fabric so you can recover beautifully.

- Soft, breathable Powerknit fabric
- Front detachable straps
- Front zipper closure for easy application
- Hook & eye closures behind zipper have a soft under padding
- 100% latex-free

### Ideal for

- Submuscular or subglandular breast augmentation
- Mastectomy

### Fabrics

Powerknit

# The Bandeau – Standard Design

## 2-8015

Sizes 32-42



### Chest Sizing Chart

Inches	Centimeters
30	76.2
32	81.3
34	86.4
36	91.4
38	96.5
40	101.6
42	106.7
44	111.8
46	116.8



### Features

Provides downward compression on top to keep implants in place while providing support for the breasts with the lower band.

- Velcro® closures on both ends of the top strap so you can adjust angle and compression
- Soft padding strip to protect inframammary crease
- 100% latex-free

### Ideal for

- Submuscular breast augmentation
- Subglandular breast augmentation

### Colors

Champagne

### Fabrics

Satin



# The Bandeau

## 2-8015CAR

Sizes 26-32



### Colors

Champagne

### Fabrics

Cotton

### Features

- Provides downward compression on top to keep implants in place
- Hook & Eye closure
- Soft padding strip to protect inframammary crease

### Ideal for

- Submuscular breast augmentation
- Subglandular breast augmentation

# The Bandeau - One Size Fits All (3")

**2-8020**

One size fits all

Breast & Chest



## Features

Provides downward compression on the top of breasts to keep implants in place during healing.

- Velcro® closures on both ends of the strap so you can adjust angle and compression easily
- 100% latex-free

## Ideal for

- Submuscular breast augmentation
- Subglandular breast augmentation

## Colors

Black

White

## Fabrics

Cotton



# Post-Augmentation Bra/Bandeau

## 2-8024

Sizes 30-44



### Colors

Champagne

### Fabrics

Satin

### Features

Combines the 2-8124 post-augmentation bra with a bandeau to stabilize implants.

- Break-away adjustable straps
- Front zipper closure for easy application
- Formed cups
- Simulated underwire support
- Bandeau strap can be adjusted for angle and compression
- 100% latex-free

### Ideal for

- Breast augmentation or reduction
- Breast reconstruction
- Submuscular breast augmentation
- Subglandular breast augmentation

# SofShape Breast Augmentation Bra

**2-8120**

Sizes 28-50



## Features

The SofShape™ Bra is the only bra with an internal support system designed to maintain contour and protect the incision site with comfort beyond comparison.

- Break-away adjustable straps
- Front zipper closure for easy application
- Formed cups
- 100% latex-free

## Ideal for

- Breast augmentation, reduction
- Breast reconstruction

## Colors

Black

## Fabrics

Satin







# Post-Augmentation Bra

**2-8124**

Sizes 26-54



## Features

Caromed post augmentation bras feature medical grade compression fabrics that help minimize swelling and bruising, while providing a slightly contoured design for support and comfort

- Front zipper closure for easy application
- Formed cups
- Simulated underwire support

## Ideal for

- Breast augmentation
- Breast reduction
- Breast reconstruction

## Colors

Black

Champagne

## Fabrics

Satin

# Semi-Shaped Cotton Bra

## 2-8125

Sizes 30-56



### Colors

White

### Fabrics

Cotton

### Features

Slightly contoured for comfort and support.

- Front hook & eye closures have a soft under padding
- 100% latex-free

### Ideal for

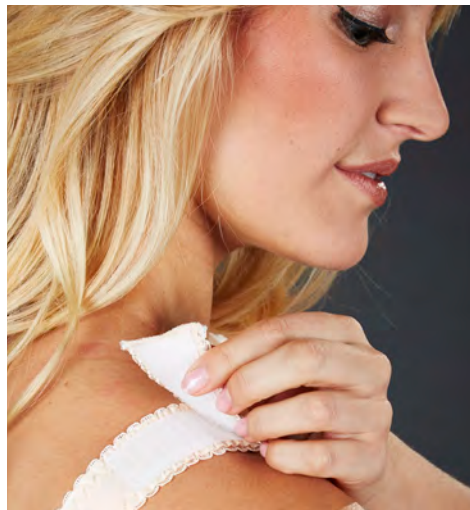
- Breast augmentation
- Breast reduction
- Breast reconstruction



# Semi-Shaped Bra with Velcro® Straps

**2-8126**

Sizes 32-52



## Features

Slightly contoured for comfort and support.

- Detachable Velcro® straps
- Front hook & eye closures have a soft under padding
- 100% latex-free

## Ideal for

- Breast augmentation
- Breast reduction
- Breast reconstruction

## Colors

Champagne

## Fabrics

Satin



# Reconstruction Sports Bra w/bulb holders

## 2-8126ELC

Sizes 30-54

A-DD



### Colors

Champagne

### Fabrics

Satin

### Features

Provides active support after surgery.

- Satin fabric that is internally lined with soft, breathable cotton
- Adjustable Velcro® front closure
- Adjustable Velcro® straps
- Two drain pouches with Velcro® attachments on both sides can be easily removed
- Additional drain pouches can also be ordered
- 100% latex-free

### Ideal for

- Breast reduction
- Breast reconstruction

# Semi-Shaped Bra with Velcro® Straps

**2-8127**

Sizes 32-50



## Features

Slightly contoured for comfort and support.

- Detachable Velcro® straps
- Front hook & eye closures have a soft under padding
- 100% latex-free

## Ideal for

- Breast augmentation
- Breast reduction
- Breast reconstruction

## Colors

White

## Fabrics

Cotton



# First Impression (by AAdvantage)

## 226-230

Sizes: XS - XXL

### Chest Sizing Chart

Item	Size	Inches
226	S	32-34
227	M	34.5-36
228	L	36.5-38
229	XL	38.5-40
230	XXL	40.5+



White Nylon/Lycra®, with Pouch



### Colors

White

### Fabrics

Nylon/Lycra®

### Features

- Adjustable straps with Velcro® closure
- Zipper front closure
- Seamless one-piece design provides coverage and protection of incision area
- Single knit nylon and Lycra® Spandex® provides maximum support and security with a superior fit
- Removable and adjustable pouch with Velcro® strap easily accommodates drain or pain pump

### Ideal for

- Breast Augmentation or Reduction
- Breast Reconstruction
- Biopsy
- Lumpectomy
- Mastectomy



# First Choice (by AAdvantage)

## 517-523

Sizes: XS - 4X



### Chest Sizing Chart

Item	Size	Inches
517	S	32-34
518	M	34.5-36
519	L	36.5-38
520	XL	38.5-40
521	2X	40.5-42
522	3X	42.5-44
523	4X	44.5-46



White Nylon/Lycra®, with Pouch

### Features

- Adjustable straps with Velcro® closures
- Hook-and-Eye front closure
- Wide elastic band provides maximum support and security
- Crisscross back for posture support
- 3-piece cups with flat seams
- Removable and adjustable pouch with Velcro® strap easily accommodates drain or pain pump

### Ideal for

- Breast Augmentation
- Breast Reconstruction
- Breast Reduction
- Biopsy
- Lumpectomy
- Mastectomy

### Colors

White

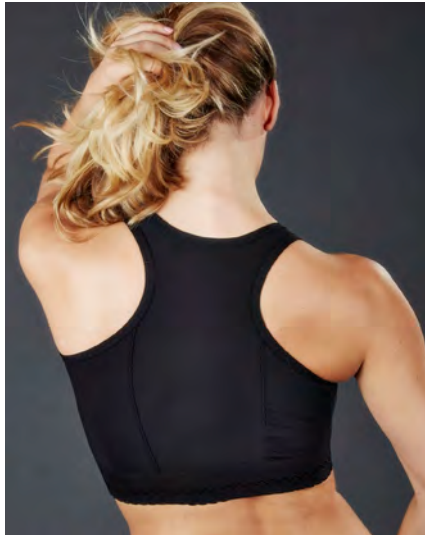
### Fabrics

Nylon/Lycra®

# SuperSilky Compression Bra

**SC-410** SuperSilky Compression Bra

Sizes: XS - 3X



## Colors

Black

Beige

## Fabrics

SuperSilky

## Features

- Seamless universal cup
- Adjustable hook & eye shoulder straps
- Extra-wide bottom band for added support
- Double-ply front panel
- Built-in pouch for use with prosthetics

## Ideal for

- Breast reconstruction
- Breast reduction
- Lumpectomies

*Sculptures*<sup>®</sup>  
compression wear

**SC-415** Lace Surgical Bra

Sizes: XS - 3X



## Features

- Seamless universal cup
- Front hook & eye closure
- Adjustable shoulder straps
- Side front band for added support

## Ideal for

- Breast augmentation

## Colors

Black

## Fabrics

Cotton

### Surgical Bras, Female Bra Vests and Arm Support

	X-Small	Small	Medium	Large	X-Large	2X-Large	3X-Large
Chest (in.)	30 - 32	32 - 34	36 - 38	40 - 42	44 - 46	48 - 50	51 - 54
Bicep (in.)	9.5	10	11	12	13	14.5	16

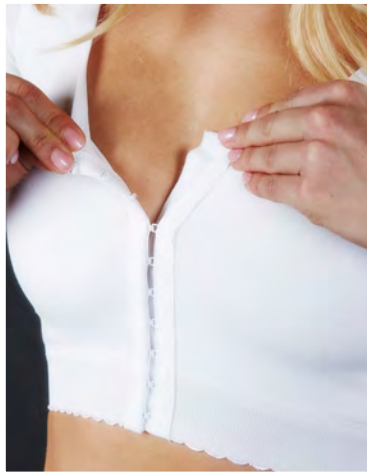


# Sports Bra with Sleeves

**SC-475** Sports Bra with Sleeves

Sizes: XS - XXL

*Sculptures*<sup>®</sup>  
compression wear



## Colors

White

## Fabrics

SuperSilky

Jersey Knit

## Features

- Jersey knit fabric bra
- SuperSilky fabric over the full back and arms
- Seam on the top of the arm to avoid interference with the surgical site
- Front hook & eye closure

## Ideal for

- Breast augmentation
- Brachioplasty
- Liposuction of the arms, axilla, and upper back

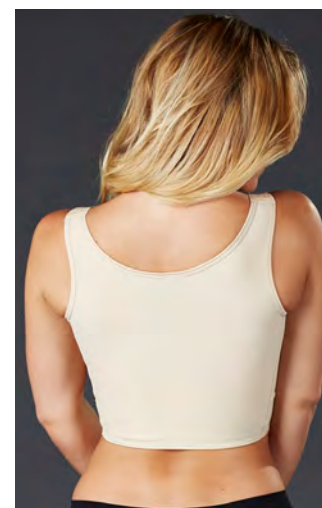
Surgical Bras, Female Bra Vests and Arm Support							
	X-Small	Small	Medium	Large	X-Large	2X-Large	3X-Large
Chest (in.)	30 - 32	32 - 34	36 - 38	40 - 42	44 - 46	48 - 50	51 - 54
Bicep (in.)	9.5	10	11	12	13	14.5	16

**SC-480** Female Bra Vest

**SC-495** Female Bra Vest with Sleeves

Sizes: **S, M, L, XL, XXL**

Beige SC-480    Black SC-495



## Features

- Extend below the breasts for added supportStandard
- Full coverage across the back
- Female Bra Vest has an adjustable hook & eye shoulder strap design
- Vest with Sleeves provides full coverage of the axilla, armpit, and arms
- Vest with Sleeves features seams on the top of the arm, so as not to disturb the surgical site

## Ideal for

- Breast reconstruction & reduction
- Mastopexy
- Liposuction of the arms & upper back

## Colors

Black

Beige

## Fabrics

Satin

# CAROMED®

## Waistbinder Collection

---



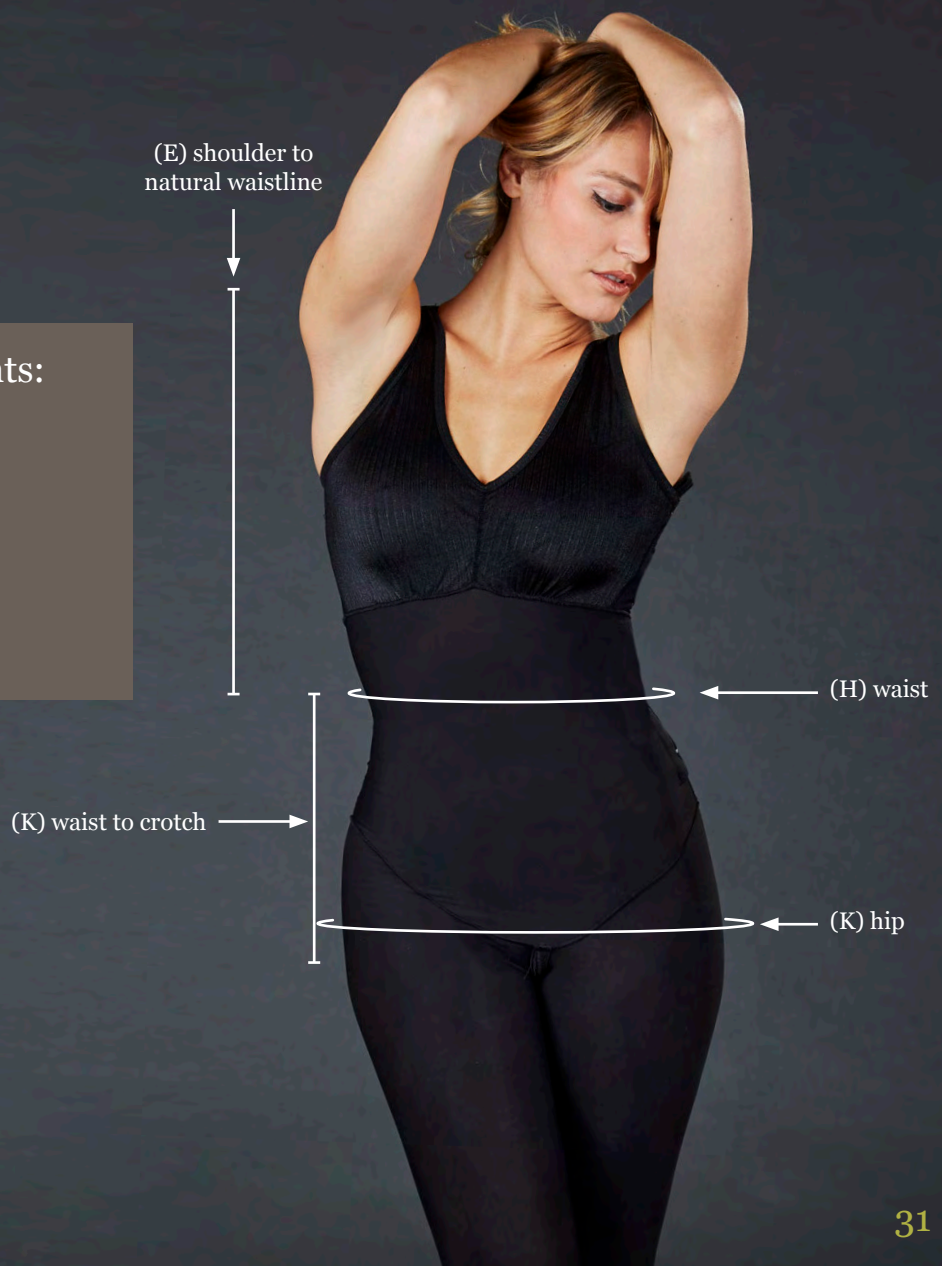


## Waistbinders

The precise fit of a compression garment requires specific measurements. The following guidelines provide you with needed measurements and how-to-measure graphs.

Record the following measurements:

- (E) shoulder to natural waistline
- (H) waist
- (I) waist to crotch
- (K) hip





3-8504-12  
Black Waistbinder



# Unisex One-Flap Waistbinder



White Waistbinder



X-shaped Back

White:

**3-8004-9 9"**

**3-8004-12 12"**

Black:

**3-8504-9 9"**

**3-8504-12 12"**

Sizes: XS - 3X

## Waist Sizing Chart

Size	Waist	
	Inches	Centimeters
XS	22-24	55.9-61
S	26-28	66-71.1
M	30-36	76.2-91.4
L	38-42	96.5-106.7
XL	44-46	111.8-116.8
XXL	47-48	119.4-121.9
3X	50-51	127-129.5

## Features

- Soft cotton liner wicks moisture away from the body
- X-shape elastic across the back ensures a “hug the body” fit
- Reinforced back panel provides extra support
- Breathable fabric
- 100% latex-free

## Ideal for

- Abdominoplasty
- Lipoplasty of the abdomen, flanks and midriff

## Colors

White

Black

## Fabrics

Cotton





3-8027-9  
White Waistbinder

# Unisex Multi-Flap Waistbinder

White:

**3-8027 9"**

**3-8037 12"**

Black:

**3-8527 9"**

**3-8537 12"**

**3-8547 15"**

Sizes: XS - 3X



White 3-8037-12



X-shaped Back

## Waist Sizing Chart

Size	Waist	
	Inches	Centimeters
XS	22-24	55.9-61
S	26-28	66-71.1
M	30-36	76.2-91.4
L	38-42	96.5-106.7
XL	44-46	111.8-116.8
XXL	47-48	119.4-121.9
3X	50-51	127-129.5

## Features

- Soft, cotton liner wicks away moisture from the body
- X-shape elastic across the back ensures a “hug the body” fit
- Reinforced back panel provides extra support
- Breathable fabric
- 100% latex-free

## Ideal for

- Abdominoplasty
- Lipoplasty of the abdomen, flanks and midriff

## Colors

White

Black

## Fabrics

Cotton



# CAROMED®

## Girdle Collection

---





## Girdles and Compression Suits

The precise fit of a compression garment requires specific measurements. The following guidelines provide you with needed measurements and how-to-measure graphs.

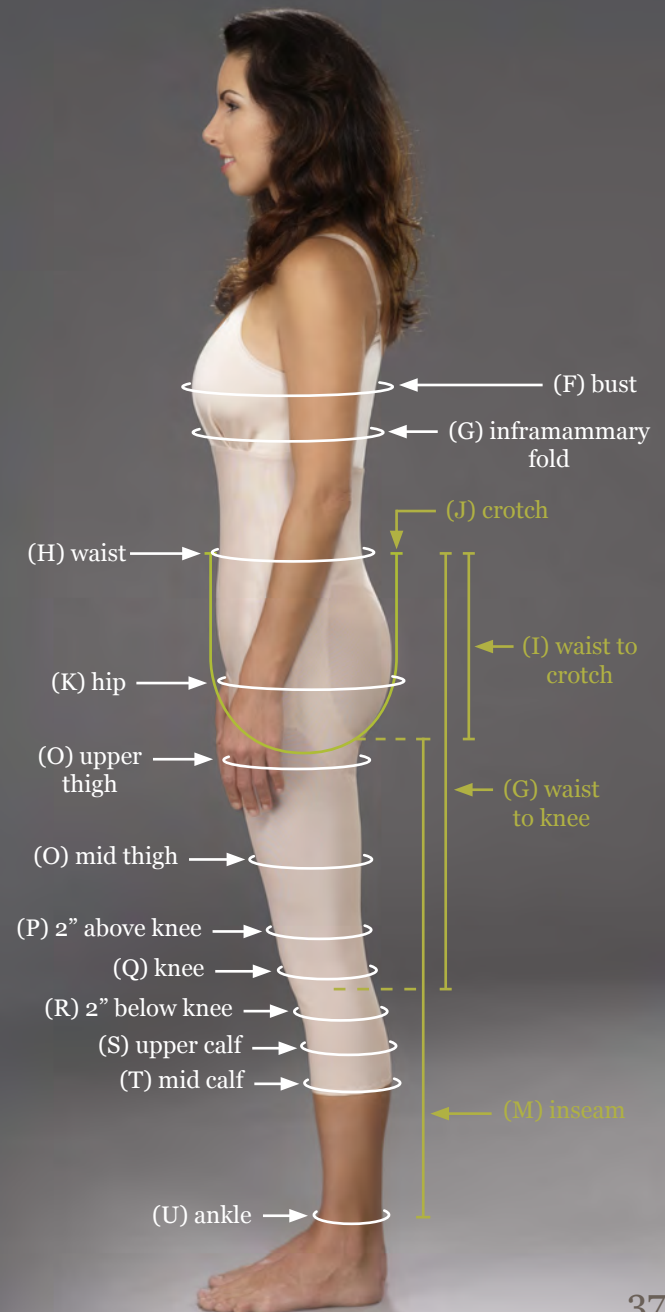
Record the following measurements:

### Circumferential Measurements

- (F) bust
- (G) inframammary fold
- (H) waist
- (K) hip
- (N) upper thigh
- (O) mid thigh
- (P) 2" above knee
- (Q) knee
- (R) 2" below knee
- (S) upper calf
- (T) mid calf
- (U) ankle

### Lengths

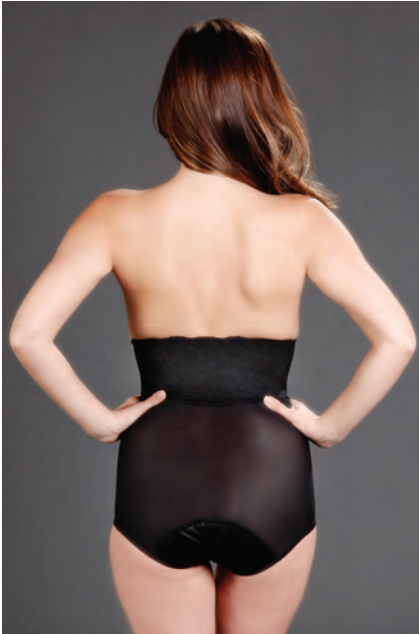
- (I) waist to crotch
- (J) crotch
- (L) waist to knee
- (M) inseam



# Female Abdominoplasty Garment

## 3-8005

Sizes: XS - 3X



### Abdomen & Waist Sizing Chart

Size	Inches		Centimeters	
	Hip	Waist	Hip	Waist
XS	31 - 33	23 - 25	83.8	58.4-63.5
S	34 - 36	25 - 27	86.4-91.4	63.5-68.6
M	37 - 39	27 - 29	94.0-99.1	68.6-73.7
L	40 - 42	30 - 32	101.6-106.7	76.2-81.3
XL	43 - 45	33 - 36	109.2-114.3	83.8-91.4
XXL	45 - 48	37- 40	114.3-121.9	94.0-101.6
3X	49 - 53	40 - 44	124.5-134.6	101.6-111.8

#### Colors

Black

Champagne

#### Fabrics

Powerknit

#### Features

- Made with lightweight, breathable Powerknit fabric
- Standard 4" waistband
- 2" and 6" waistbands available as custom option
- Slit opening in the flap to accommodate urinary catheters
- Additional drain pouches can also be ordered
- Padded, easy-to-use zippers
- Velcro® flap crotch closure
- 100% latex-free

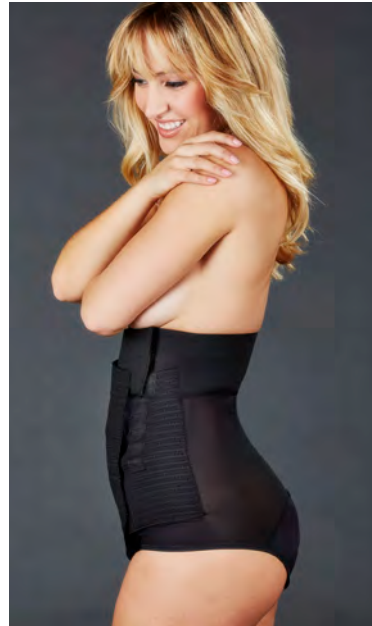
#### Ideal for

- Lipectomy of the abdomen
- Traditional abdominoplasty

# Adjustable Abdominoplasty Garment

**3-8025**

Sizes: XS - XXL



## Abdomen & Waist Sizing Chart

Size	Inches		Centimeters	
	Hip	Waist	Hip	Waist
XS	31 - 33	23 - 25	83.8	58.4-63.5
S	34 - 36	25 - 27	86.4-91.4	63.5-68.6
M	37 - 39	27 - 29	94.0-99.1	68.6-73.7
L	40 - 42	30 - 32	101.6-106.7	76.2-81.3
XL	43 - 45	33 - 36	109.2-114.3	83.8-91.4
XXL	45 - 48	37- 40	114.3-121.9	94.0-101.6

### Features

- Adjustable Velcro® openings at the waist, abdomen and crotch
- Powerknit back and bottom combined with cotton waistbinder
- Can be ordered for men with scrotal support pouch
- Slit opening in the flap to accommodate urinary catheters
- 100% latex-free

### Ideal for

- Lipoplasty of the trochanteric area, abdomen and flanks

### Colors

Black

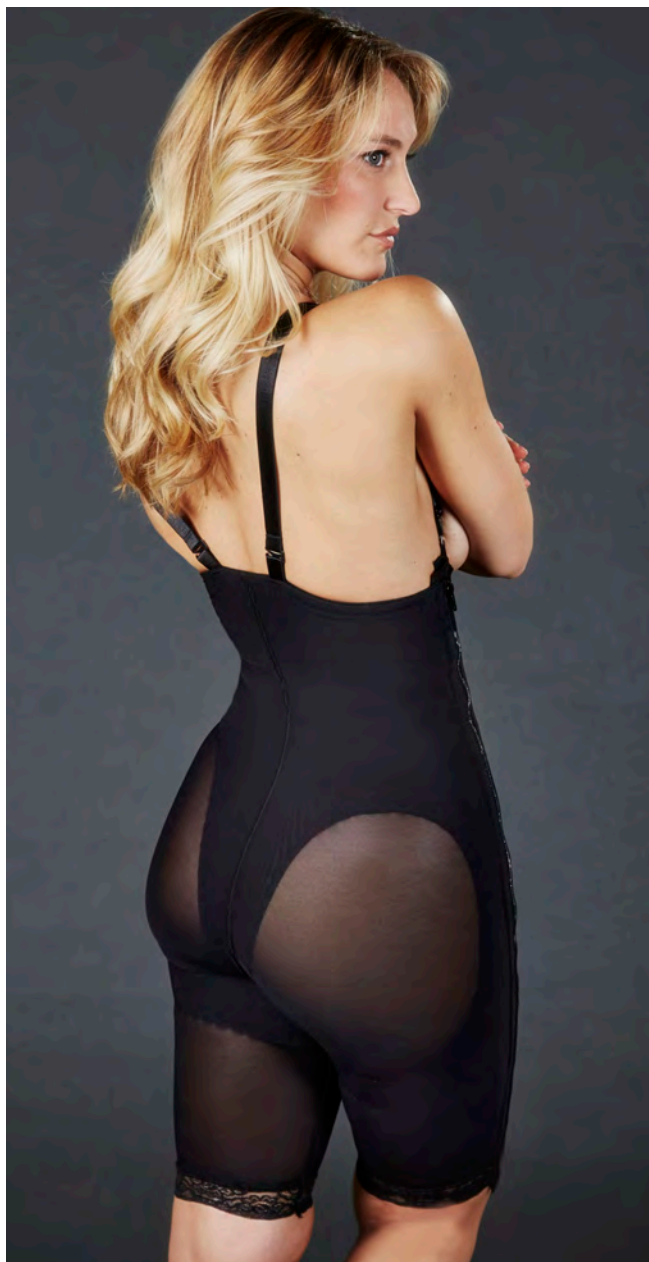
### Fabrics

Powerknit





# Powerknit Suspended Girdle



## Order by Length:

- 4-4000** Capri
- 4-4010B** Legless (Black only)
- 4-4012** Above-the-Knee

Sizes: XS - 3X  
4-4010B up to 2X



## Abdomen & Waist Sizing Chart

Size	Inches		Centimeters	
	Hip	Waist	Hip	Waist
XS	33-34	23-24	83.8-86.4	58.4-61
S	35-36	25-26	88.9-91.4	63.5-66
M	37-38	27-28	94-96.5	68.6-71.1
L	40-43	30-33	101.6-109.2	76.2-83.8
XL	44-46	34-36	111.8-116.8	86.4-91.4
XXL	48-50	38-40	121.9-127	96.5-101.6
3X	52-54	42-44	132.1-137.2	106.7-111.7

## Features

- Lace and hidden seaming on a reinforced panel for a smooth appearance
- Zippers with hook & eye closures for easy application in the OR and at home
- Front detachable suspender strap
- Available without zippers as a second stage garment
- Open crotch design
- 100% latex-free

## Ideal for

- Lipoplasty of the trochanteric area, abdomen, thighs, hips, buttocks and flanks

## Colors

- Black
- Champagne

## Fabrics

- Powerknit







# Suspended Brazilian Lift Garment

Order by Length:

**4-4700** Capri

**4-4712** Above-the-Knee

Sizes: XS - 3X



Black Satin, Front



Black Satin, Side

## Abdomen & Waist Sizing Chart

Size	Inches		Centimeters	
	Hip	Waist	Hip	Waist
XS	33-34	23-24	83.8-86.4	58.4-61
S	35-36	25-26	88.9-91.4	63.5-66
M	37-38	27-28	94-96.5	68.6-71.1
L	40-43	30-33	101.6-109.2	76.2-83.8
XL	44-46	34-36	111.8-116.8	86.4-91.4
XXL	48-50	38-40	121.9-127	96.5-101.6

Custom sizes available.

## Features

- Designed with gluteal cutouts and a soft liner to cover buttocks
- Side zippers with hook & eye closures for easy application in the operating room and at home
- Open crotch design for added comfort and convenience
- Suspended to keep the girdle in place
- 100% latex-free

## Ideal for

- Brazilian Buttocks Lifts
- Buttocks implants
- Natural fat transfers to buttocks

## Colors

Black

## Fabrics

Powerknit



# Powerknit Girdle

## 4-8000

Order by Length:

**4-8000** Capri

**4-8012** Above-the-Knee

**4-8013** Ankle Length

Sizes: XS - 3X

4-8013 available in Champagne only



### Abdomen & Waist Sizing Chart

Size	Inches		Centimeters	
	Hip	Waist	Hip	Waist
XS	31 - 33	23 - 25	83.8	58.4-63.5
S	34 - 36	25 - 27	86.4-91.4	63.5-68.6
M	37 - 39	27 - 29	94.0-99.1	68.6-73.7
L	40 - 42	30 - 32	101.6-106.7	76.2-81.3
XL	43 - 45	33 - 36	109.2-114.3	83.8-91.4
XXL	45 - 48	37 - 40	114.3-121.9	94.0-101.6
3X	49 - 53	40 - 44	124.5-134.6	101.6-111.8

### Features

- Lace and hidden seaming on a reinforced panel for a smooth appearance
- Standard 4" waistband
- 2" and 6" waistbands available as custom option
- Zippers with hook & eye closures for easy application in the OR and at home
- Open crotch design
- 100% latex-free

### Ideal for

- Lipoplasty of the trochanteric area, abdomen, thighs, hips, buttocks, flanks and knees

### Colors

- Black
- Champagne

### Fabrics

- Powerknit

\*For abdomen and waist sizing chart, go to page 63.



# Abdomino/Lipo Combination Girdle

## 4-8200

Order by Length:

**4-8200** Capri

**4-8212** Above-the-Knee

Sizes: XS - XXL

### Abdomen & Waist Sizing Chart

Size	Inches		Centimeters	
	Hip	Waist	Hip	Waist
XS	33-34	23-24	83.8-86.4	58.4-61
S	35-36	25-26	88.9-91.4	63.5-66
M	37-38	27-28	94-96.5	68.6-71.1
L	40-43	30-33	101.6-109.2	76.2-83.8
XL	44-46	34-36	111.8-116.8	86.4-91.4
XXL	48-50	38-40	121.9-127	96.5-101.6
Chest sizes 32-44			Chest sizes 81.3-111.8	

Custom sizes available.



Black, Capri Length



Champagne, Capri Length

### Colors

Black

Champagne

### Fabrics

Powerknit

### Features

- Lightweight, breathable Powerknit fabric
- Hidden seaming on a reinforced panel for a smooth appearance
- Standard 6" waistband
- 2" and 4" waistbands available as custom option
- Velcro® flap closure for precise abdominal compression
- Zippers with hook & eye closures for easy application in the operating room and at home
- 100% latex-free

### Ideal for

- Abdominoplasty plus lipoplasty of the trochanteric area, abdomen, thighs, hips, flanks and knees

## Satin Girdle

4-8500

Order by Length:

4-8500 Capri

4-8512 Above-the-Knee

Sizes: XS - XXL



## Abdomen &amp; Waist Sizing Chart

Size	Inches		Centimeters	
	Hip	Waist	Hip	Waist
XS	31 - 33	23 - 25	83.8	58.4-63.5
S	34 - 36	25 - 27	86.4-91.4	63.5-68.6
M	37 - 39	27 - 29	94.0-99.1	68.6-73.7
L	40 - 42	30 - 32	101.6-106.7	76.2-81.3
XL	43 - 45	33 - 36	109.2-114.3	83.8-91.4
XXL	45 - 48	37 - 40	114.3-121.9	94.0-101.6
3X	49 - 53	40 - 44	124.5-134.6	101.6-111.8

## Features

- Lace and hidden seaming on a reinforced panel for a smooth appearance
- Standard 4" waistband
- 2" and 6" waistbands available as custom option
- Zippers with hook & eye closures for easy application in the OR and at home
- Open crotch design
- 100% latex-free

## Ideal for

- Lipoplasty of the trochanteric area, abdomen, thighs, hips, buttocks, flanks and knees

## Colors

Black

Champagne

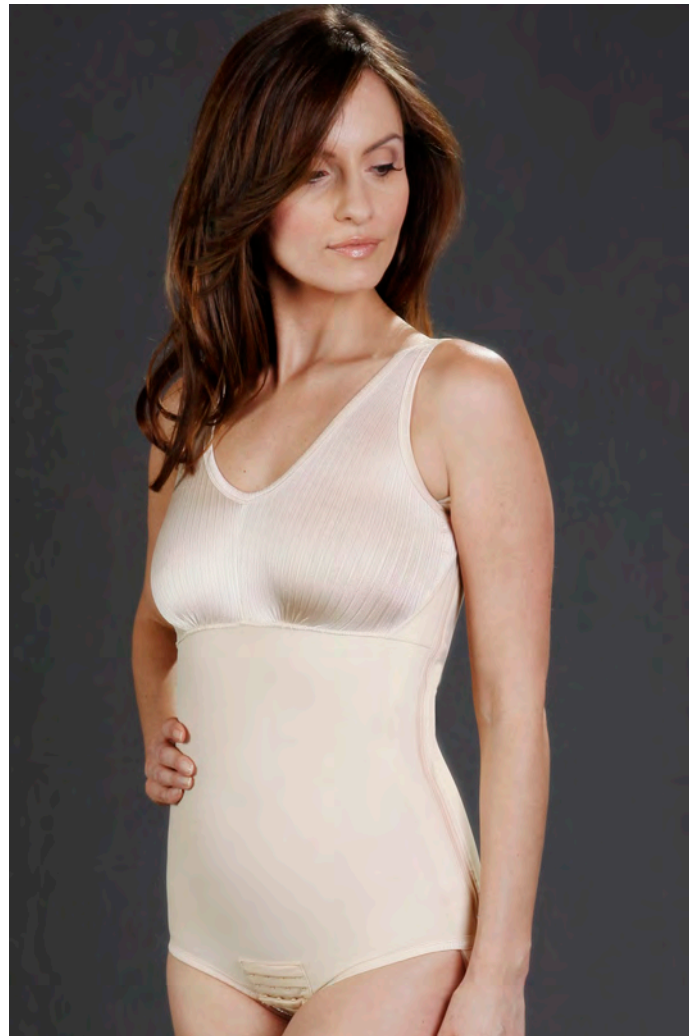
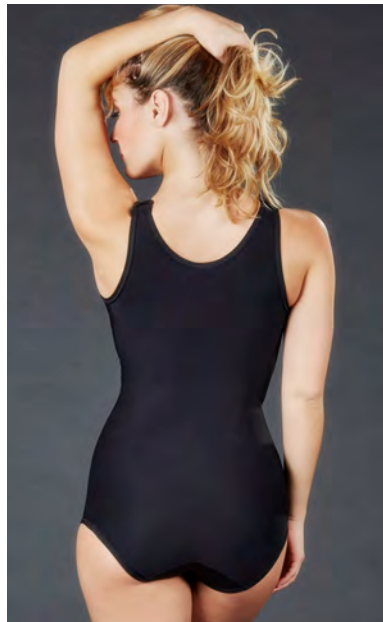
## Fabrics

Satin

# Stage 1 Body Shapers

**SC-25** Abdominoplasty Body Shaper

Sizes: XS - XXL



Female Girdles and Body Shapers

	X-Small	Small	Medium	Large	X-Large	2X-Large	3X-Large	4X-Large	5X-Large	6X-Large
Dress Size	0 - 2	4 - 6	8 - 10	12 - 14	14 - 16	18	20	22 - 24	26 - 28	30 +
Waist (in.)	23 - 25	25 - 27	27 - 29	30 - 32	33 - 36	37 - 40	40 - 44	45 - 49	50 - 55	56 +
Hips (in.)	31 - 33	34 - 36	37 - 39	40 - 42	43 - 45	45 - 48	49 - 53	54 - 58	59 - 63	64 +

## Colors

Black

Beige

## Fabrics

Sateen

## Features

- Built-in bra
- Side zipper design
- Made with Sateen fabric
- Uniform, uninterrupted compression over the full abdominal area

## Ideal for

- Breast augmentation
- Abdominoplasty
- Liposuction of the abdomen, flanks and upper back

*Sculptures*<sup>®</sup>  
compression wear





**SC-25F** Abdominoplasty Body Shaper  
with Front Zipper

Sizes: XS - XXL



## Features

- Front zip closure
- Ultra-comfortable Sateen fabric
- Recloseable Velcro<sup>®</sup> crotch
- Hook & eye beneath zipper closure for easy application

## Ideal for

- Breast augmentation
- Abdominoplasty
- Liposuction of the abdomen, flanks and upper back

## Colors

Black

## Fabrics

Sateen

# Stage 1 Body Shapers

## Order by Length:

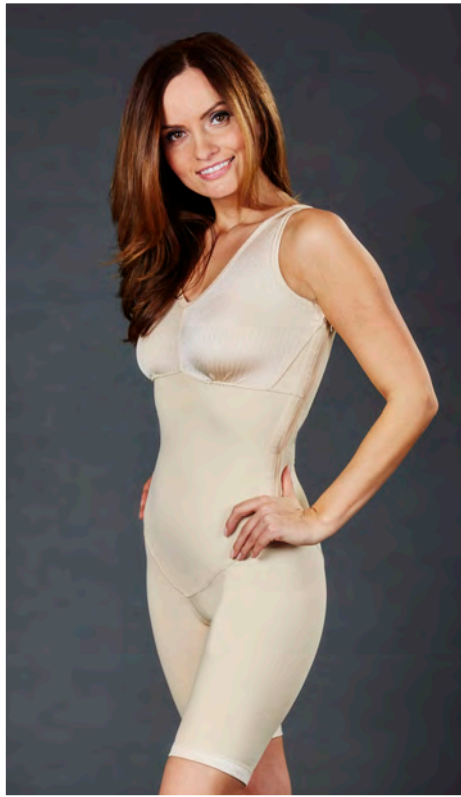
**SC-250** Above-the-Knee

**SC-255** Below-the-Knee

**Sizes: XS - XXL**

4X - 6x only available in beige.

Petite only available in Black.



SC-250



SC-255

## Colors

Black

Beige

## Fabrics

Sateen

## Features

- Made with our Sateen fabric to provide uniform compression
- Hook & eye closure beneath its single, side zipper closure
- Available in Petite sizes for patients 5'3" and under

## Ideal for

- Abdominoplasty
- Liposuction of the abdomen, thighs, hips, buttocks, flanks, upper back and knees
- Natural fat transfer
- Breast lifts and augmentation

*Sculptures*<sup>®</sup>  
compression wear



**Order by Length:**

- SC-26** Abdominoplasty with Sleeves
- SC-260** Above-the-Knee with Sleeves
- SC-265** Below-the-Knee with Sleeves  
(not shown)

Sizes: **XS - XXL**

**Female Girdles and Body Shapers\***

	X-Small	Small	Medium	Large	X-Large	2X-Large	3X-Large	4X-Large	5X-Large	6X-Large
Dress Size	0 - 2	4 - 6	8 - 10	12 - 14	14 - 16	18	20	22 - 24	26 - 28	30 +
Waist (in.)	23 - 25	25 - 27	27 - 29	30 - 32	33 - 36	37 - 40	40 - 44	45 - 49	50 - 55	56 +
Hips (in.)	31 - 33	34 - 36	37 - 39	40 - 42	43 - 45	45 - 48	49 - 53	54 - 58	59 - 63	64 +

**Features**

- Seam on the top of the arm to avoid interference with the surgical site
- Made with SuperSilky fabric
- Back reinforcement panel for added support and compression
- Hook & eye beneath zipper closure for easy application

**Ideal for**

- Breast augmentation
- Brachioplasty
- Liposuction of the arms, axilla and upper back

**Colors**

Beige

**Fabrics**

SuperSilky

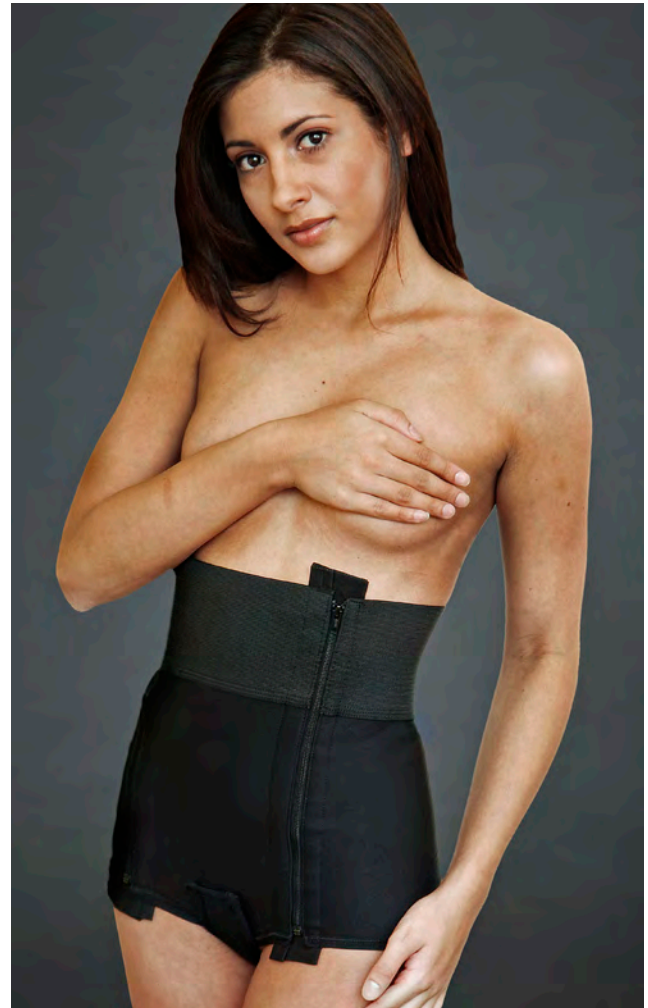


# Stage 1 Girdles

## SC-200 Abdominoplasty Girdle

Sizes: XS - 6X

4X - 6x only available in beige.



SC-200

### Female Girdles and Body Shapers

	X-Small	Small	Medium	Large	X-Large	2X-Large	3X-Large	4X-Large	5X-Large	6X-Large
Dress Size	0 - 2	4 - 6	8 - 10	12 - 14	14 - 16	18	20	22 - 24	26 - 28	30 +
Waist (in.)	23 - 25	25 - 27	27 - 29	30 - 32	33 - 36	37 - 40	40 - 44	45 - 49	50 - 55	56 +
Hips (in.)	31 - 33	34 - 36	37 - 39	40 - 42	43 - 45	45 - 48	49 - 53	54 - 58	59 - 63	64 +

### Colors

Black

Beige

### Fabrics

Sateen

### Features

- Plush 4" anti-roll waistband
- Made with our Sateen material to provide uniform compression
- Front reinforcement panel
- Bilateral full-length hook & eye beneath separating zippers
- Flap-over cotton crotch with Velcro® closure

### Ideal for

- Abdominoplasty
- Liposuction of the abdomen and flanks

*Sculptures*<sup>®</sup>  
compression wear



SC-215

SC-210

### Order by Length:

**SC-210** Above-the-Knee

**SC-215** Below-the-Knee

**SC-219** Ankle Length

**Sizes: XS - XXL**

SC-219 is only available in Beige.



SC-219

### Features

- 4" anti-roll waistband
- Made with SuperSilky fabric
- Reinforced front panel
- Bilateral hook & eye beneath zipper closure
- Open crotch design

### Ideal for

- Abdominoplasty
- Liposuction of the abdomen, hips and lower body

### Colors

Black

Beige

### Fabrics

SuperSilky

# Stage 1 Girdles

## Order by Length:

**SC-220** Above-the-Knee

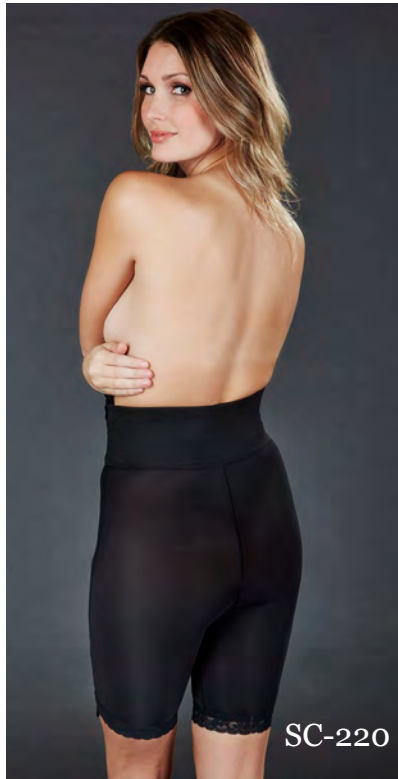
**SC-225** Below-the-Knee

**Sizes: XS - 3X**

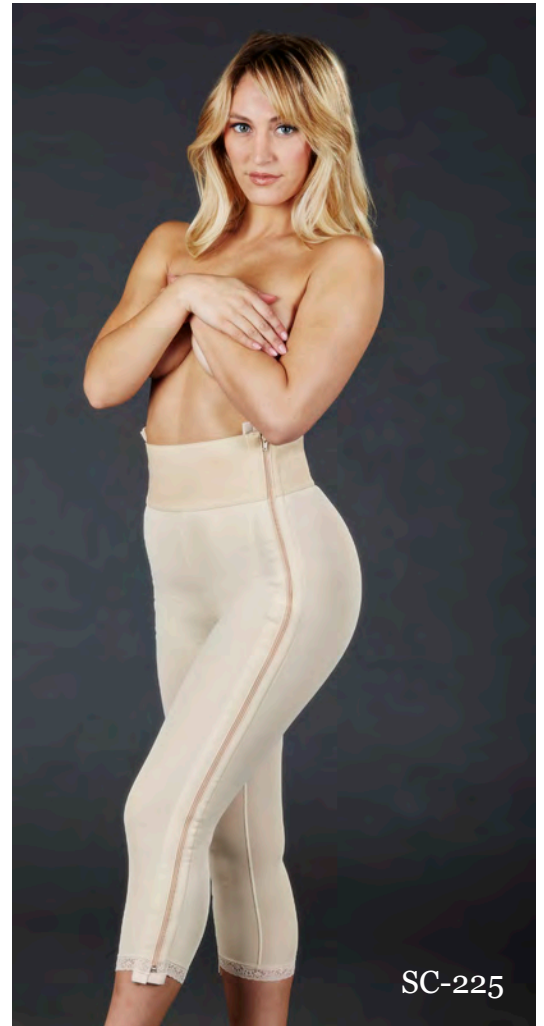
SC-225 size 3X only available in Beige.



Fully separating zippers



SC-220



SC-225

## Female Girdles and Body Shapers

	X-Small	Small	Medium	Large	X-Large	2X-Large	3X-Large	4X-Large	5X-Large	6X-Large
Dress Size	0 - 2	4 - 6	8 - 10	12 - 14	14 - 16	18	20	22 - 24	26 - 28	30 +
Waist (in.)	23 - 25	25 - 27	27 - 29	30 - 32	33 - 36	37 - 40	40 - 44	45 - 49	50 - 55	56 +
Hips (in.)	31 - 33	34 - 36	37 - 39	40 - 42	43 - 45	45 - 48	49 - 53	54 - 58	59 - 63	64 +

## Colors

Black

Beige

## Fabrics

SuperSilky

## Features

- 4" anti-roll waistband
- Ultra-lightweight, breathable SuperSilky fabric
- Front reinforcement panel
- Bilateral hook & eye beneath zipper closure
- Fully separating zippers on the leg cuffs
- Open crotch design

## Ideal for

- Abdominoplasty
- Liposuction of the abdomen, hips and lower body

*Sculptures*<sup>®</sup>  
compression wear



**Order by Length:**

- SC-230** Above-the-Knee
- SC-235** Below-the-Knee

**Sizes: XS - 6X**

SC-230 girdles are only available up to size 2X.



SC-230

SC-235

## Features

- 6" anti-roll waistband
- Ultra-lightweight, breathable SuperSilky fabric
- Front reinforcement panel
- Bilateral hook & eye beneath zipper closure
- Open crotch design

## Ideal for

- Abdominoplasty
- Liposuction of the abdomen, thighs, hips, buttocks, flanks and knees

## Colors

Black

Beige

## Fabrics

SuperSilky

# Stage 1 Strapped Girdles

## Order by Length:

**SC-240** Strapped Above-the-Knee

**SC-245** Strapped Below-the-Knee

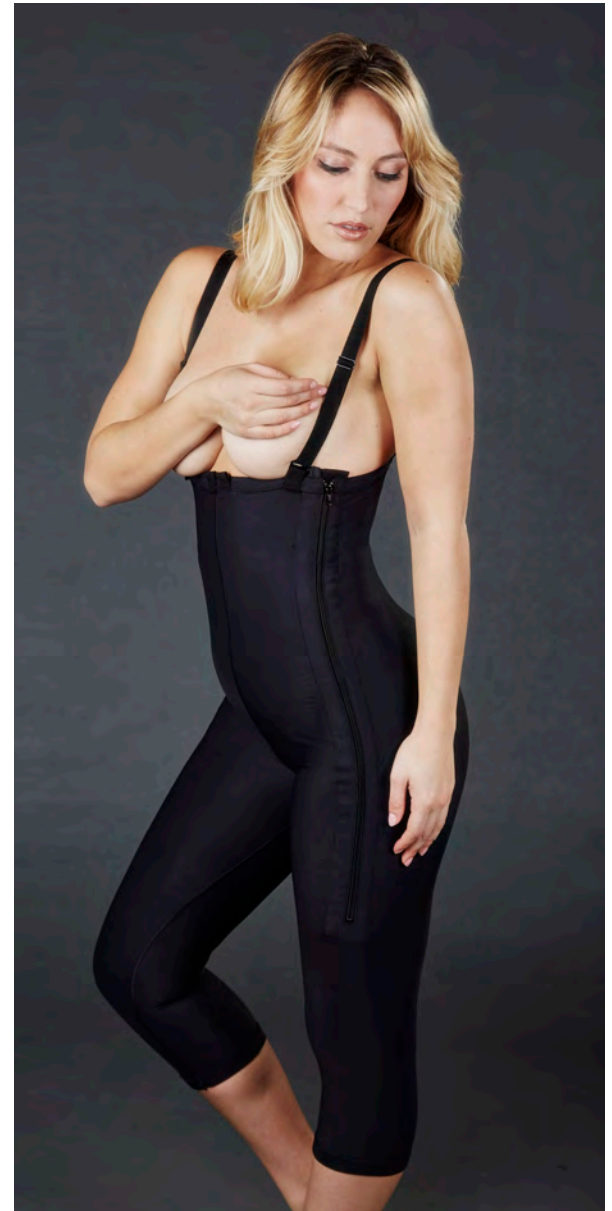
Sizes: **XS - 6X**

SC-245 girdles are only available up to size 4X.

Size 5X and 6X garments are only available in Beige.



SC-240



SC-245

## Colors

Black

Beige

## Fabrics

Sateen

## Features

- Contoured fit that extends high on the upper torso
- Adjustable, detachable shoulder straps that can be fastened between or at the outside of the breasts
- Bilateral hook & eye beneath zipper closure
- Open crotch design
- Non-rolling leg cuffs
- Sateen fabric for the ultimate in compression

## Ideal for

- Abdominoplasty
- Liposuction of the abdomen, thighs, hips, buttocks, flanks and knees

*Sculptures*<sup>®</sup>  
compression wear

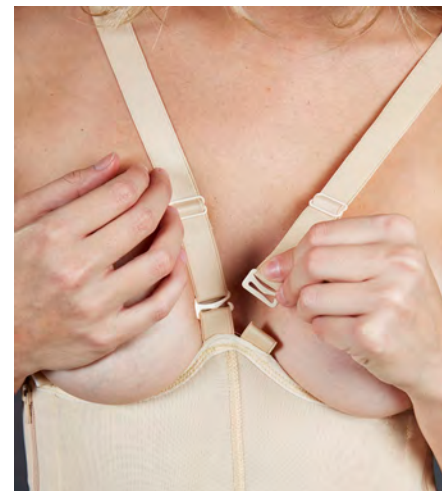


SC-310



**SC-310** Above-the-Knee

Sizes: XS - 3X



### Female Girdles and Body Shapers

	X-Small	Small	Medium	Large	X-Large	2X-Large	3X-Large	4X-Large	5X-Large	6X-Large
Dress Size	0 - 2	4 - 6	8 - 10	12 - 14	14 - 16	18	20	22 - 24	26 - 28	30 +
Waist (in.)	23 - 25	25 - 27	27 - 29	30 - 32	33 - 36	37 - 40	40 - 44	45 - 49	50 - 55	56 +
Hips (in.)	31 - 33	34 - 36	37 - 39	40 - 42	43 - 45	45 - 48	49 - 53	54 - 58	59 - 63	64 +

### Features

- Adjustable slide shoulder straps with 2" hook attachment
- Made with SuperSilky fabric
- Reinforced front panel
- Full-length bilateral hook & eye beneath separating zippers for easy application
- Open crotch design

### Ideal for

- Abdominoplasty
- Liposuction of the upper and lower back, lower back, abdomen, hips, thighs and buttocks

### Colors

Beige

### Fabrics

SuperSilky



# Stage 1 Brazilian Body Shapers

## Order by Length:

**SC-290** Above-the-Knee

**SC-295** Below-the-Knee

Sizes: **XS - 2X**

SC-295 available in black only



SC-290



SC-295

Female Girdles and Body Shapers										
	X-Small	Small	Medium	Large	X-Large	2X-Large	3X-Large	4X-Large	5X-Large	6X-Large
Dress Size	0 - 2	4 - 6	8 - 10	12 - 14	14 - 16	18	20	22 - 24	26 - 28	30 +
Waist (in.)	23 - 25	25 - 27	27 - 29	30 - 32	33 - 36	37 - 40	40 - 44	45 - 49	50 - 55	56 +
Hips (in.)	31 - 33	34 - 36	37 - 39	40 - 42	43 - 45	45 - 48	49 - 53	54 - 58	59 - 63	64 +

## Colors

Black

Beige

## Fabrics

Sateen

## Features

- Gluteal cutouts to offer built-in relief to the buttocks and implantation area
- Made with compressive Sateen fabric
- Outside seams, hook & eye beneath the side zipper closure
- Open crotch design

## Ideal for

- Brazilian butt lifts
- Butt implants
- Natural fat transfers to buttocks

*Sculptures*<sup>®</sup>  
compression wear



SC-325



SC-320

**Order by Length:**

**SC-320** High Back Above-the-Knee

**SC-325** High Back Below-the-Knee

Sizes: XS - XXL

## Features

Sculptures Liposuction Foam<sup>®</sup> inserts at the small of the back to help cinch the waist, enhance compression, and sculpt the top of the buttocks.

- Cotton gluteal backing
- Ultra-compressive Sateen fabric
- Adjustable suspenders stabilize the girdle
- Open crotch design

## Ideal for

- Liposuction of the trochanteric area, abdomen, hips, flanks, buttocks and thighs
- Post-natal compression

## Colors

Black

## Fabrics

Sateen





SC-285



SC-280





**Order by Length:**

- SC-28** Boy Short
- SC-280** Above-the-Knee
- SC-285** Below-the-Knee

Sizes: XS - XXL



Front reinforcement panel

**Female Girdles and Body Shapers**

	X-Small	Small	Medium	Large	X-Large	2X-Large	3X-Large	4X-Large	5X-Large	6X-Large
Dress Size	0 - 2	4 - 6	8 - 10	12 - 14	14 - 16	18	20	22 - 24	26 - 28	30 +
Waist (in.)	23 - 25	25 - 27	27 - 29	30 - 32	33 - 36	37 - 40	40 - 44	45 - 49	50 - 55	56 +
Hips (in.)	31 - 33	34 - 36	37 - 39	40 - 42	43 - 45	45 - 48	49 - 53	54 - 58	59 - 63	64 +

**Features**

Provides compression to the lower body throughout the extended recovery period.

- Pull-on application – no zippers
- Open crotch design
- Front reinforcement panel for a smooth appearance
- 2” waistband
- Lightweight, breathable, self-wicking fabric
- 100% latex-free

**Ideal for**

- Liposuction of the trochanteric area, abdomen, hips, flanks, buttocks and thighs
- Post-natal compression

**Colors**

- Black
- Beige

**Fabrics**

- SuperSilky



SC-270



SC-27





SC-27

**Order by Length:**

**SC-27** Legless

**SC-270** Above-the-Knee

Sizes: XS - XXL



**Female Girdles and Body Shapers**

	X-Small	Small	Medium	Large	X-Large	2X-Large	3X-Large	4X-Large	5X-Large	6X-Large
Dress Size	0 - 2	4 - 6	8 - 10	12 - 14	14 - 16	18	20	22 - 24	26 - 28	30 +
Waist (in.)	23 - 25	25 - 27	27 - 29	30 - 32	33 - 36	37 - 40	40 - 44	45 - 49	50 - 55	56 +
Hips (in.)	31 - 33	34 - 36	37 - 39	40 - 42	43 - 45	45 - 48	49 - 53	54 - 58	59 - 63	64 +

**Features**

- Combination of breathable Satin body and a soft silk bra top
- Pull-on application – no zippers
- Adjustable shoulder straps with “Z-hook” attachment for easy inspection
- Front reinforcement panel for a smooth appearance
- Open crotch design
- 100% latex free

**Ideal for**

- Procedures combining breast reduction, reconstruction or augmentation

**Colors**

- Black
- Champagne

**Fabrics**

- SuperSilky



# CAROMED®

## Male Garment Collection

---



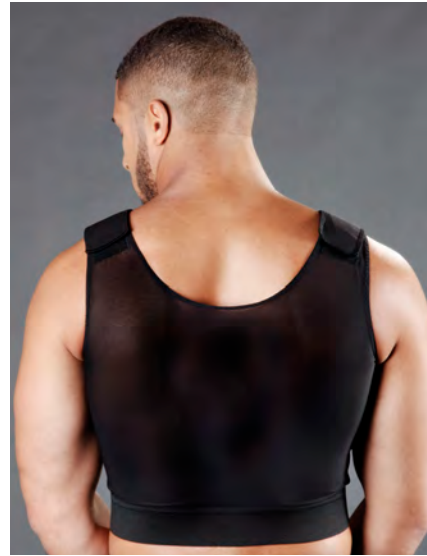
2-8003  
Beige

# Male Compression Vest

Men's

## 2-8003

Sizes: 2XS - 3X



### Male Chest Sizing Chart

Size	Inches		Centimeters	
	Chest	Waist	Chest	Waist
2XS	26-28	32		
XS	30-32	34	76.2-81.3	86.4
S	34-36	36	86.4-91.4	91.4
M	38-40	38	96.5-101.6	96.5
L	42-44	40	106.7-111.8	101.6
XL	46-48	42	116.8-121.9	106.7
XXL	50-52	44	127-132.1	111.8
3X	54-56	46	137.1-142.3	116.9

### Features

- Lightweight, breathable Powerknit fabric
- Double-reinforced front panels
- Comfortable Velcro® shoulder straps
- Easy-to-use zipper and hook & eye closures have a soft under padding
- 100% latex free

### Ideal for

- Gynecomastia procedures
- Lipoplasty of the back, midriff and flanks

### Colors

Black

Beige

### Fabrics

Powerknit

\*For sizing chart, go to page 63.

# Male Compression Girdle

## Order by Length:

**4-8100** Above-the-Knee

**4-8112** Below-the-Knee

Sizes: **XS - XXL**



## Male Waist Sizing Chart

Size	Waist	
	Inches	Centimeters
XS	26-27	66-68.6
S	28-30	71.1-76.2
M	32-34	81.3-86.4
L	36-38	91.4-96.5
XL	40-42	101.6-106.7
XXL	44-46	111.8-116.8

## Colors

Black

## Fabrics

Powerknit

## Features

- Lightweight, breathable Powerknit fabric
- Convenient open crotch
- Double-reinforced front panels
- 4" waistband
- 100% latex-free

## Ideal for

- Lipoplasty of the trochanteric area, the abdomen or thighs, hips, buttocks, flanks and knees



## SC-100

Sizes: S/M, L/XL



	Small/ Medium	Large/ X-Large
Chest (in.)**	24 - 48	44 - 70

### Features

- Lightweight, breathable Powerknit fabric
- Double-reinforced front panels
- Comfortable Velcro<sup>®</sup> shoulder straps
- Easy-to-use zipper and hook & eye closures have a soft under padding
- 100% latex free

### Ideal for

- Gynecomastia procedures
- Lipoplasty of the back, midriff and flanks

### Colors

- Black
- White

### Fabrics

- Powerknit

# Male Abdominoplasty Garment

## SC-205

Sizes: S - 3X



Male Girdles, Body Shapers and Compression Shirt		
	Chest (in.)	Waist (in.)
Small	36 - 38	32 - 35
Medium	39 - 42	34 - 36
Large	43 - 46	37 - 39
X-Large	47 - 50	40 - 42
2X-Large	51 - 54	43 - 46
3X-Large	55 - 58	47 - 51

### Colors

Black

### Fabrics

SuperSilky

### Features

- Lightweight, breathable Powerknit fabric
- Velcro® flap closure
- Reinforced, double-zipper front closure (3-9005 only)
- Scrotal support pouch
- 4" waistband
- 100% latex-free

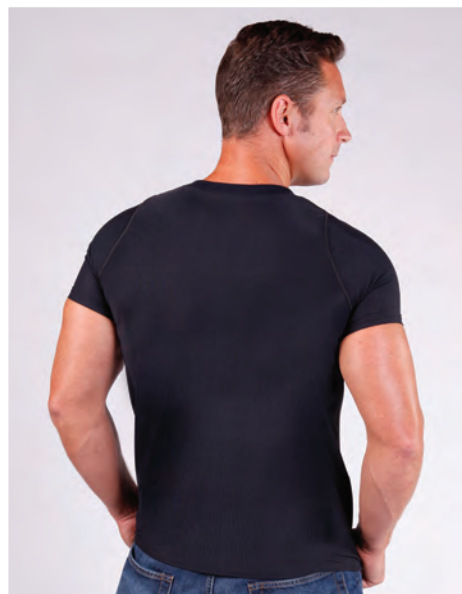
### Ideal for

- Traditional abdominoplasty
- Lipectomy of the abdomen

*Sculptures*®  
compression wear

## SC-175

Sizes: S - XXL



Male Girdles, Body Shapers and Compression Shirt		
	Chest (in.)	Waist (in.)
Small	36 - 38	32 - 35
Medium	39 - 42	34 - 36
Large	43 - 46	37 - 39
X-Large	47 - 50	40 - 42
2X-Large	51 - 54	43 - 46
3X-Large	55 - 58	47 - 51

### Features

- SuperSilky Fabric
- Tapered design provides a contoured fit
- Maximum compression to the chest, upper back and flanks, and upper and lower abdomen.

### Ideal for

- Following gynecomastia
- Liposuction of the upper body

### Colors

Black

### Fabrics

SuperSilky



NEW!



**SC-150**

Sizes: S - 3X



Male Girdles, Body Shapers and Compression Shirt		
	Chest (in.)	Waist (in.)
Small	36 - 38	32 - 35
Medium	39 - 42	34 - 36
Large	43 - 46	37 - 39
X-Large	47 - 50	40 - 42
2X-Large	51 - 54	43 - 46
3X-Large	55 - 58	47 - 51

**Features**

Provides compression to the upper body, hips and thighs.

- Hook & eye beneath side zipper
- Flat external seams
- Open crotch design
- Front reinforcement panel
- Adjustable shoulder straps
- Lightweight, breathable, self-wicking fabric
- 100% latex-free

**Ideal for**

- Liposuction of the trochanderic area, abdomen, and lower body
- Gynecomastia

**Colors**

- Black
- Beige

**Fabrics**

- Satin



# CAROMED®

## Surgical Supplies

---



7-8004



# Cold/Warm Therapy

- 7-8004 Caromed 4"dia. Cold Pack w/ Fabric Back  
Colors: Clear, Strawberry, Plum, Blue, Lime, Tangerine
- 7-8006 Caromed 6"dia Cold Packs w/ Fabric Back - Strawberry, Blue
- 7-8007 Caromed 7"x6" Cold/Warm Pack w/ Fabric Back - Blue

## Features

Our fabric back gel packs are reusable and can be customized with your practice image and information.

- Soft fabric backing to protect skin
- Gel remains pliable when cold
- 7" x 6" Cold/Warm Pack offers cold and warm therapy
- 100% latex free

## Ideal for

- Cold/Warm therapy
- Post-operative recovery
- Injections and facial cosmetic procedures
- Craniofacial surgery
- Temporomandibular joint surgery or disease
- Orthognathic procedures
- Pediatric facial surgery
- Joint and muscle pain (warm therapy)

7-8004



Strawberry

Plum

Clear

Blue

Tangerine

Lime

7-8006



7-8007







# Photo Panties



7-8500 Back



7-8500B Front

7-8500 Female White Full Seat Disposable Photo Panties  
(50/bag)

7-8500XL Female White Full Seat XL Disposable Photo Panties  
(25/bag)

7-8500B Female Blue Full Seat Disposable Photo Panties  
(50/bag)

7-8501 Female Black Full Seat Disposable Photo Panties  
(50/bag)

7-8505 Female White Thong Cut Disposable Photo Panties  
(50/bag)

7-8570 Male White Cloth Brief Disposable Photo Panties  
(25/bag)

7-8571 Male Black Cloth Brief Disposable Photo Panties  
(25/bag)



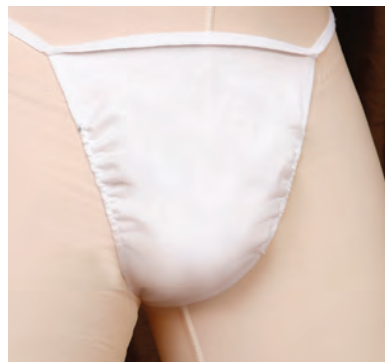
7-8501 Front

## Features

- Soft, poly-blend fabric
- Elastic waistband
- Modest design exposes hips and thighs without distorting body contour

## Ideal for

- Pre/Post-operative photography
- Pre-operative marking
- Post-operative inspection



7-8570 Front



7-8505 Back



# Sculptures Liposuction Foam®

*Sculptures*<sup>®</sup>  
compression wear

**SC-810** Sculptures Liposuction Foam® Sheets  
(12/case) 8" x 10.5" Sheets

**SC-815** Sculptures Liposuction Foam® Roll  
15' Roll (21" width)

## Features

Sculptures Liposuction Foam® can be cut to the desired shape and size and used for post-operative support, comfort and compression/contouring.

- Soft medical grade polyurethane foam
- Absorbency qualities (approx. 1 L fluid)
- Packaged in UV-restricted bags for extended shelf life

## Ideal for

- Traditional liposuction
- Tumescence Technique Liposuction
- Bruising and swelling
- Chin and neck contouring



# Garment Care Instructions

---

When applying and caring for your Caromed compression garment at home, please follow these instructions carefully. Your garment is a medical device, designed and manufactured to help provide you with optimal cosmetic results.

Caromed recommends that someone assist you with your at-home garment application. Again, follow the instructions one step at a time, and take your time.

Application of your Caromed garment is a step-by-step process. Caromed garments are designed for ease of application; however, since this garment is a medical device, we ask that you follow all instructions carefully for best results.

## HELPFUL TIPS

To apply your Caromed garment at home: If you have just showered, make certain that you are completely dry before applying your Caromed garment. Assume a seated position on a bed or comfortable chair. If at any time during the application of your girdle, you become fatigued, please take a minute to rest.

## GIRDLES

While seated, fasten the girdle up to the knee area. Secure both the hook & eyes closures and zippers.

Remain seated, step into the girdle and position the girdle properly, gently pulling the girdle into place. While standing propped near your chair or bed, pull the girdle up making sure to position the crotch opening as far up as possible.

Fasten the remaining hook & eye closures on one side only. Carefully pull up the zipper. Now fasten the hook & eye closures on the remaining side. This side will be somewhat more difficult to secure and we recommend that someone be present to provide assistance.

After the hook & eye closures are secured, carefully zip up this side.

**PLEASE USE EXTRA CAUTION TO AVOID CATCHING THE ZIPPER IN THE INNER FACING.**

**Important:** If the zipper becomes snagged – **STOP IMMEDIATELY. DO NOT** attempt to force the zipper in any direction. Remove the entire garment completely. This alleviates the tension placed on the zipper. You now will be able to gently work with the zipper until it is freed from the facing.

**Urination:** Caromed recommends that all female patients purchase a small, flexible plastic funnel to position close to the perineum when voiding. This will prevent accidental splashing or spraying of the garment. Voiding in the standing position will probably be more comfortable the first few days following surgery.

**Elimination:** We recommend that you unzip one side, drop the flap, hold securely to one side and elimination can be accomplished quite easily without soiling the garment.

**Laundry:** Caromed recommends that you hand wash your Caromed garment in lukewarm water with a mild soap or detergent, then air dry. Please do not dry your garment in an electric or gas dryer as this may ruin the garment.

**MOST PATIENTS REQUIRE TWO GARMENTS IN ORDER TO HAVE A FRESHLY LAUNDERED ONE AVAILABLE**

To remove bloodstains, simply soak your garment in a basin of cool water to which 1/4 cup of peroxide has been added. Then launder and let air-dry.



# CAROMED<sup>®</sup>

recover beautifully

[www.caromed.us](http://www.caromed.us) Phone: (800) 948-1938 Fax: (888) 311-7596 Email: [sales@caromed.us](mailto:sales@caromed.us)