

Compression
Garment
Collection

A woman with long, wavy blonde hair is shown from the waist up, turned slightly to her left but looking back over her right shoulder towards the camera. She is wearing a black, form-fitting, sleeveless compression garment with a ribbed texture. The background is a solid dark grey. The entire image is framed by a light green border.

CAROMED®
recover beautifully

Quality

As the first post-surgical garment manufacturer, Caromed has defined industry standards for excellence and integrity. Today, our garments are available in new, elegantly designed styles that allow you to recover in comfort—and recover beautifully.

Throughout our history, we've earned a proven reputation for producing superior medical-grade compression garments with unmatched dedication and exacting attention to detail. We have evolved from offering a few select garments, to being a market leader with an extensive array of elite products for cosmetic and reconstructive patients around the world.

All Caromed garments are produced in using world-class fabrics from the finest mills. Each fabric is selected only if it meets our stringent guidelines for medical-grade compressive properties that satisfy scrupulous physician and patient needs. We use only the best available zippers, hook & eye closures and elastics which is why we meticulously cut, sew and produce each garment with accuracy and care.

Caromed's dedication comes from putting our hearts into making sure every garment measures up to a level of excellence medical professionals and patients have come to expect. More than anything, every Caromed garment is designed to assure you can recover in style, so you can feel beautiful about the new you.



Table of Contents

HEAD AND NECK COLLECTION	1
BREAST AND CHEST COLLECTION	6
UNISEX WAISTBINDER COLLECTION	27
GIRDLE AND SHAPER COLLECTION	32
ARMS COLLECTION	66
MALE GARMENT COLLECTION	72
SURGICAL SUPPLIES	80
CUSTOM GARMENTS	85
GARMENT CARE INSTRUCTIONS	86

CAROMED®

Head and Neck Garment Collection



Chin-Neck Garment

1-8006

Sizes: XS - 2XL



Size	Inches		Centimeters	
	Neck	Head	Neck	Head
XS	13	18	33	45.7
S	14	20	35.6	50.8
M	15	22	38.1	55.9
L	16	24	40.6	61
XL	17	26	43.2	66
2XL	18	28	45.7	71.1



Features

- Provides compression to the chin and upper neck
- Open ear design
- Adjustable Velcro® closures at the top of head and back of neck
- Soft, lightweight, breathable fabric

Ideal for

- Facial surgery
- Submental region surgery and liposuction
- Mentoplasty and/or chin implants
- Oral and maxillofacial surgery

Colors

Beige

Fabrics

Tricot

Full Face Garment

1-8007

Sizes: S - XL

Size	Inches		Centimeters	
	Neck	Head	Neck	Head
S	14	20	35.6	50.8
M	15	22	38.1	55.9
L	16	24	40.6	61
XL	17	26	43.2	66



Colors

Beige

Fabrics

Tricot

Features

- Provides comfortable compression to all areas of the face and neck
- Open ear design
- Adjustable Velcro® closures at the top of head and back of neck
- Soft, lightweight, breathable fabric

Ideal for

- Facial surgery
- Rhytidectomy and dermabrasion procedures
- Malar implant surgery
- Pediatric facial surgery

Therma-Jaw Garment

1-8018

Sizes: S - XL



Size	Inches		Centimeters	
	Neck	Head	Neck	Head
S	14	20	35.6	50.8
M	15	22	38.1	55.9
L	16	24	40.6	61
XL	17	26	43.2	66

Features

- Allows for immediate cold/warm therapy to the jaw area
- Comes with two reusable gel packs
- Bilateral pockets of soft fabric securely hold the gel packs in place
- Adjustable Velcro® closures at the top of head and back of neck
- Lightweight, soft, breathable fabric
- Extra gel packs can be ordered

Ideal for

- Cold/warm therapy
- Temporomandibular joint surgery
- Craniofacial surgery
- Orthognathic procedures
- Parotidectomy surgery
- Oral and maxillofacial surgery
- Pediatric facial surgery

Colors

Beige

Fabrics

Tricot

Face Lift Garment

1-8026

Sizes: XS - XL



Size	Inches		Centimeters	
	Neck	Head	Neck	Head
XS	13	18	33	45.7
S	14	20	35.6	50.8
M	15	22	38.1	55.9
L	16	24	40.6	61
XL	17	26	43.2	66

Colors

Beige

Fabrics

Tricot

Features

- Provides compression to the chin, upper neck and ears
- Covered ear design
- Adjustable Velcro® closures at the top of head and back of neck
- Soft, lightweight, breathable fabric

Ideal for

- Facial surgery
- Neck surgery
- Submental region surgery and liposuction
- Mentoplasty and/or chin implants
- Ear or periaural procedures
- Oral and maxillofacial surgery
- Pediatric facial surgery

Head-Neck Garment

Head & Neck

1-8201

One Size Fits All



Features

- Soft 3" cotton/spandex band provides compression to the ears, jaw and chin
- Two securing bands circle the head for added comfort and stability
- One size fits all

Ideal for

- Liposuction on submental region
- Otoplasty
- Scar revisions on submental region
- Pediatric facial surgery

Colors

White

Fabrics

Cotton/Spandex

CAROMED®

Breast & Chest Garment Collection



Shaped Compression Vest

Breast & Chest

2-8002

2-8002OS

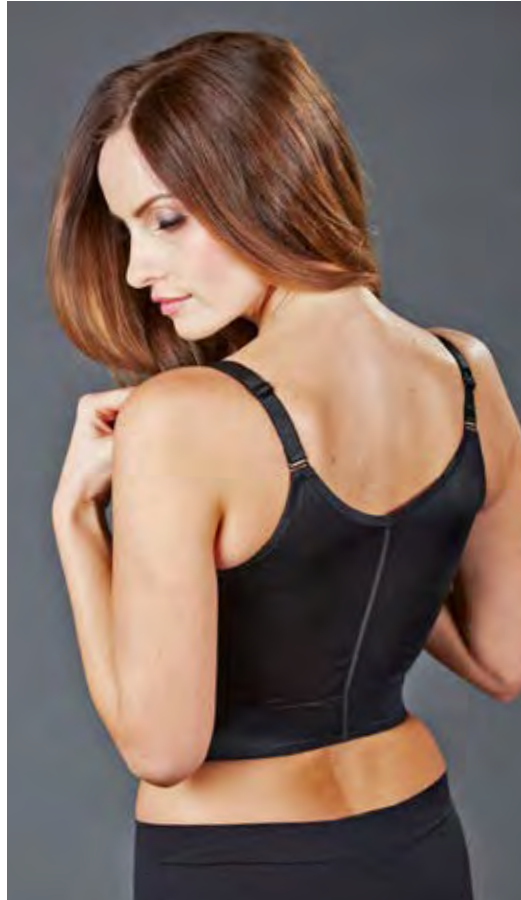
Black - Sizes: 34 - 44

Champagne - Sizes: 32 - 48

OS style only available in Champagne



2-8002



2-8002



2-8002OS

Features

- Provides comfortable compression to the chest
- Slightly contoured cup area
- Padded hook & eye closure behind front zipper for easy application
- 2" stabilization band placed low to avoid surgical site
- 2-2002 features front "Z" hook detachable straps
- 2-2002OS style features wide recloseable Velcro® shoulder straps

Ideal for

- Breast Reduction
- Breast Reconstruction
- Mastectomy
- Lumpectomy

Colors

Black

Champagne

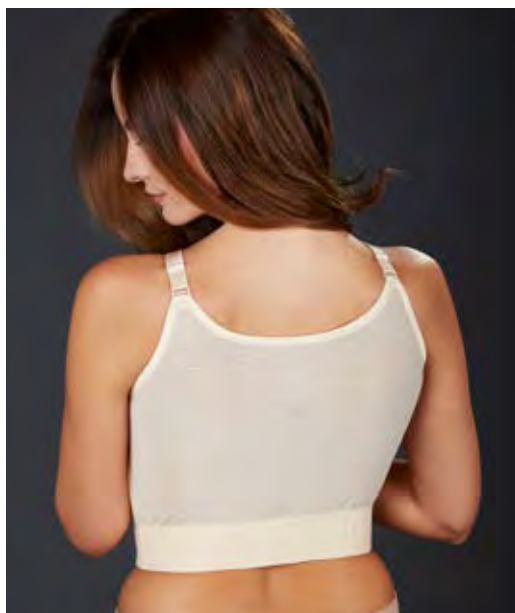
Fabrics

Satin/Spandex

Compression Vest

2-8014

Sizes: 30-46



Colors

Champagne

Fabrics

Powerknit

Features

- Provides maximum compression to the chest and upper back
- 2" stability band placed low to avoid surgical site
- Padded hook & eye closures behind front zipper for easy application
- Front detachable "Z" hook straps

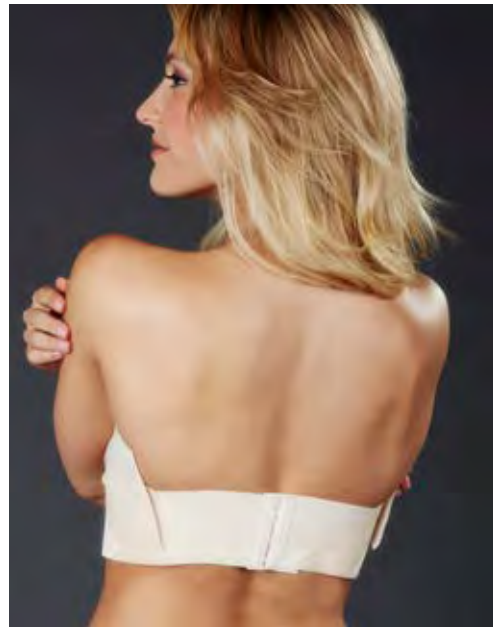
Ideal for

- Mastectomy
- Mastopexy
- Breast Augmentation
- Breast Reconstruction
- Lipoplasty of anterior and lateral axillary folds or rolls

Two Strap Bandeau

2-8015

Sizes: 30-42



Features

- Provides downward compression to keep implants in place
- Lower band provides support for the breasts
- Velcro® closures on both ends of the top strap for adjustable compression
- Padded hook & eye closure on back
- Soft padding strip on bottom strap protects inframammary creases

Ideal for

- Submuscular Breast Augmentation
- Subglandular Breast Augmentation

Colors

Champagne

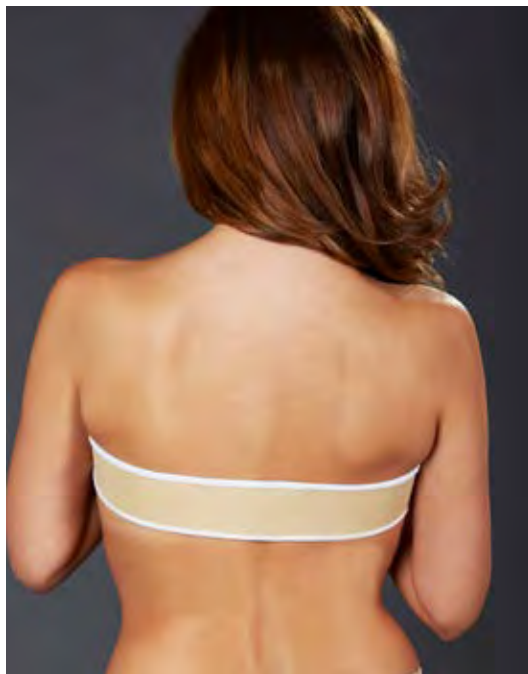
Fabrics

Satin/Spandex

The Bandeau

2-8015CAR

Sizes: 26-32



Colors

Champagne

Features

- Provides downward compression to keep implants in place
- Cotton lined for increased comfort
- Padded front hook & eye closure

Ideal for

- Submuscular Breast Augmentation
- Subglandular Breast Augmentation

Fabrics

Satin/Spandex

Universal Bandeau

Breast & Chest

2-8020

One Size Fits All



Features

- Provides downward compression to keep implants in place
- Velcro® closure for easy application

Ideal for

- Submuscular Breast Augmentation
- Subglandular Breast Augmentation

Colors

Black

White

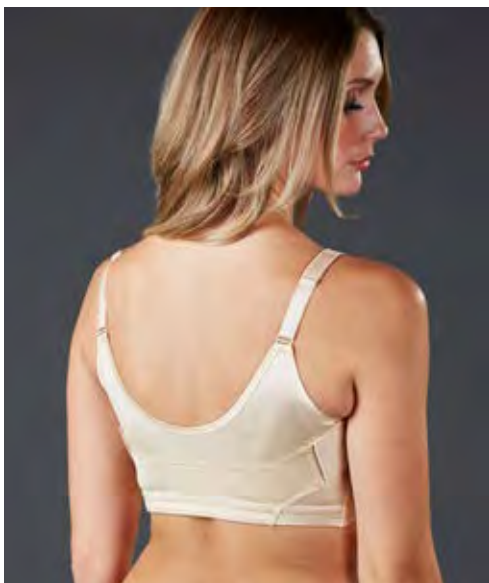
Fabrics

Cotton/Spandex

Post-Augmentation Bra w/Bandeau

2-8024

Sizes: 30-44



Colors

Champagne

Fabrics

Satin/Spandex

Features

- Combines the 2-8124 bra with a bandeau to stabilize implants
- Break-away adjustable shoulder straps
- Padded hook & eye beneath front zipper closure for easy application
- Molded cups that shape and reduce pressure on the chest
- Velcro® bandeau strap allows for adjustable downward compression
- Seamless cup for smooth, uniform compression

Ideal for

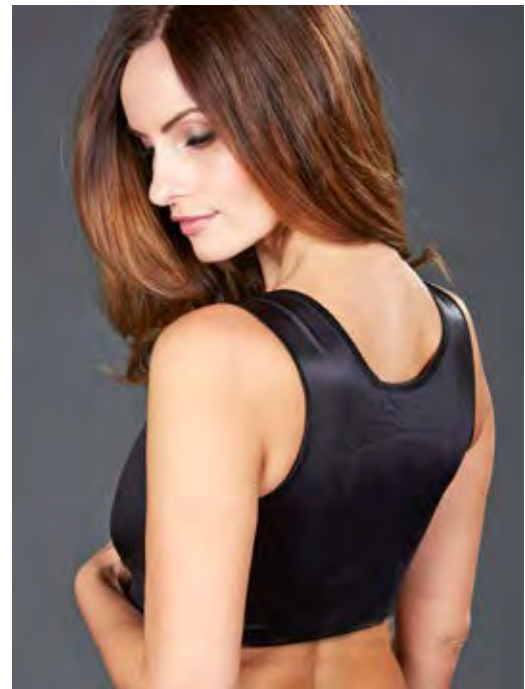
- Submuscular Breast Augmentation
- Subglandular Breast Augmentation

SofShape Breast Augmentation Bra

2-8120

Sizes: 28-50

Breast & Chest



Features

- Provides moderate support to the chest
- Front zipper closure for easy application
- Adjustable Velcro® straps allow for post-op inspection
- Padded hook & eye beneath front zipper for easy application
- Molded cups that shape and reduce pressure on chest
- Seamless cup for smooth, uniform compression

Ideal for

- Breast Augmentation
- Breast Reconstruction

Colors

Black

Fabrics

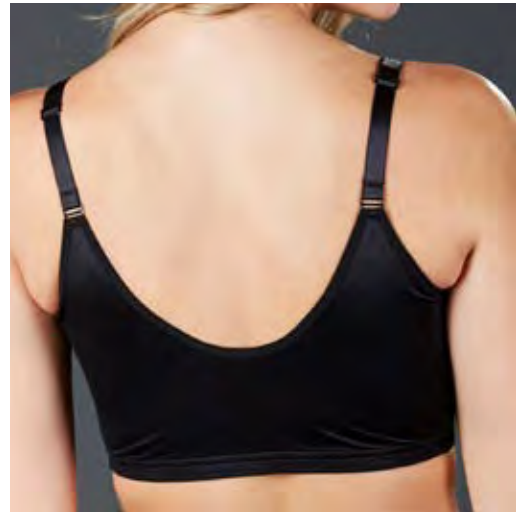
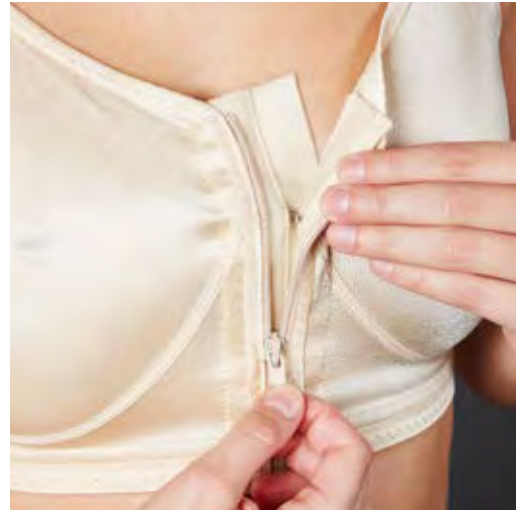
Satin/Spandex



Post-Augmentation Bra

2-8124

Sizes: 26-54



Features

- Provides moderate compression to the chest
- Slightly contoured design for support and comfort
- Molded cups that shape and reduce pressure on the breasts
- Padded hook & eye beneath front zipper closure for easy application
- Break-away adjustable shoulder straps
- Seamless cup for smooth, uniform compression

Ideal for

- Breast Augmentation
- Breast Reduction
- Breast Reconstruction

Colors

Black

Champagne

Fabrics

Satin/Spandex

Semi-Shaped Cotton Bra

2-8125

Sizes: 32-56



Colors

White

Features

- Provides light support to the chest
- Slightly contoured cup design
- Padded front hook & eye closure for easy application
- Soft, scalloped edging for additional comfort
- Lace-lined elastic band
- Seamless cup for smooth compression

Ideal for

- Breast Augmentation
- Breast Reduction
- Breast Reconstruction

Fabrics

Cotton/Spandex

Semi-Shaped Bra with Velcro® Straps

Breast & Chest

2-8126

Sizes: 32-46



Features

- Provides moderate support to the chest
- Slightly contoured cup design
- Velcro® straps for post-op inspection and adjustability
- Padded front hook & eye closure for easy application
- Seamless cup for smooth compression

Ideal for

- Breast Augmentation
- Breast Reduction
- Breast Reconstruction

Colors

Champagne

Fabrics

Satin/Spandex

Reconstruction Bra w/Bulb Holders

2-8126EL

Sizes: 32-54

Cup Sizes B-DD



Colors

Champagne

Fabrics

Satin/Spandex

Features

- Provides full coverage and maximum support to the chest
- Velcro® front closure for easy application
- Extra-wide Velcro® straps for stability and easy post-op inspection
- Internal cotton lining for extra breathability
- Seamless cup for uniform compression
- Bilateral removable drain pouches with Velcro® attachments
- Additional drain pouches can be ordered

Ideal for

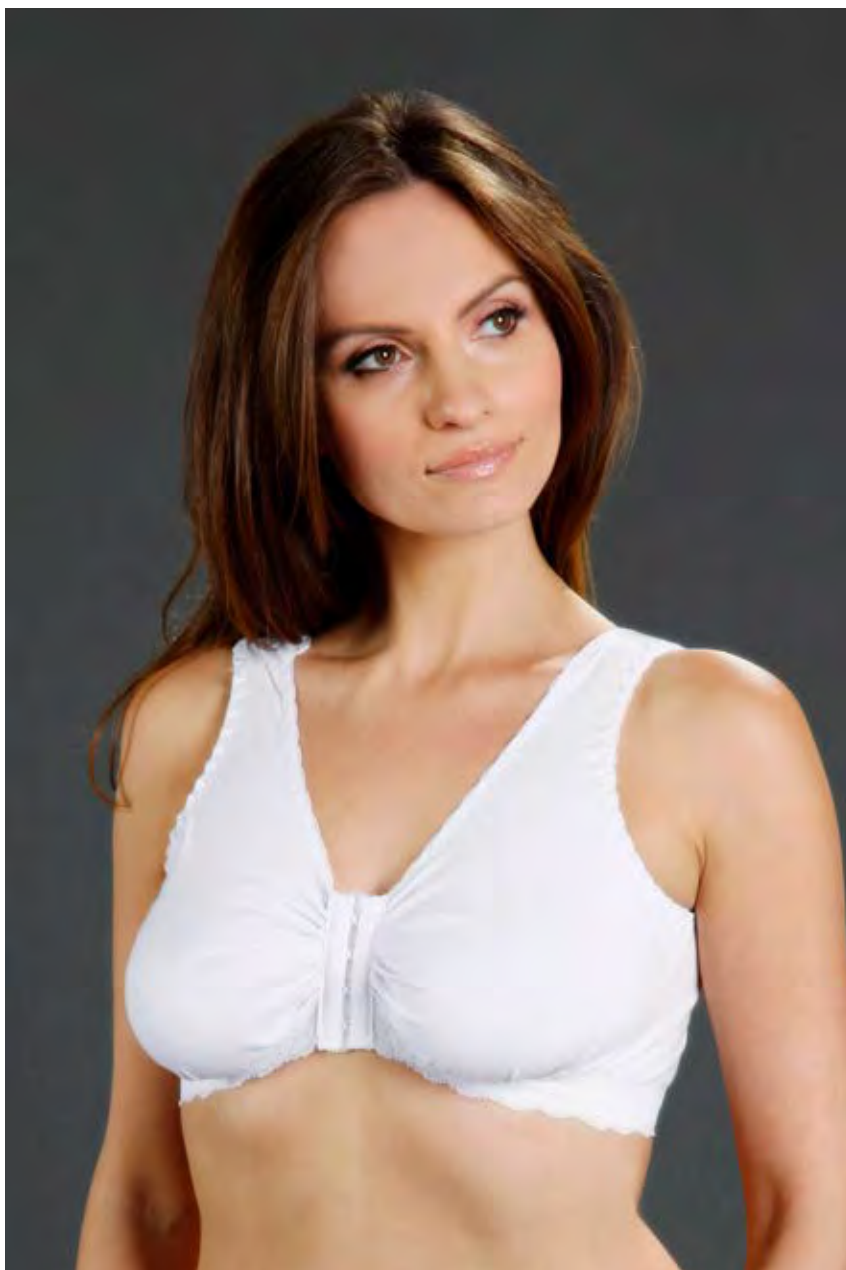
- Mastectomy
- Lumpectomy
- Breast Reconstruction
- Breast Reduction

Semi-Shaped Cotton Bra w/Velcro® Straps

Breast & Chest

2-8127

Sizes: 32-50



Features

- Provides light support to the chest
- Velcro® straps for post-op inspection and adjustability
- Slightly contoured cup design
- Padded front hook & eye closure for easy application
- Soft, scalloped edging for additional comfort
- Lace-lined elastic band
- Seamless cup for smooth compression

Ideal for

- Breast Augmentation
- Breast Reduction
- Breast Reconstruction

Colors

White

Fabrics

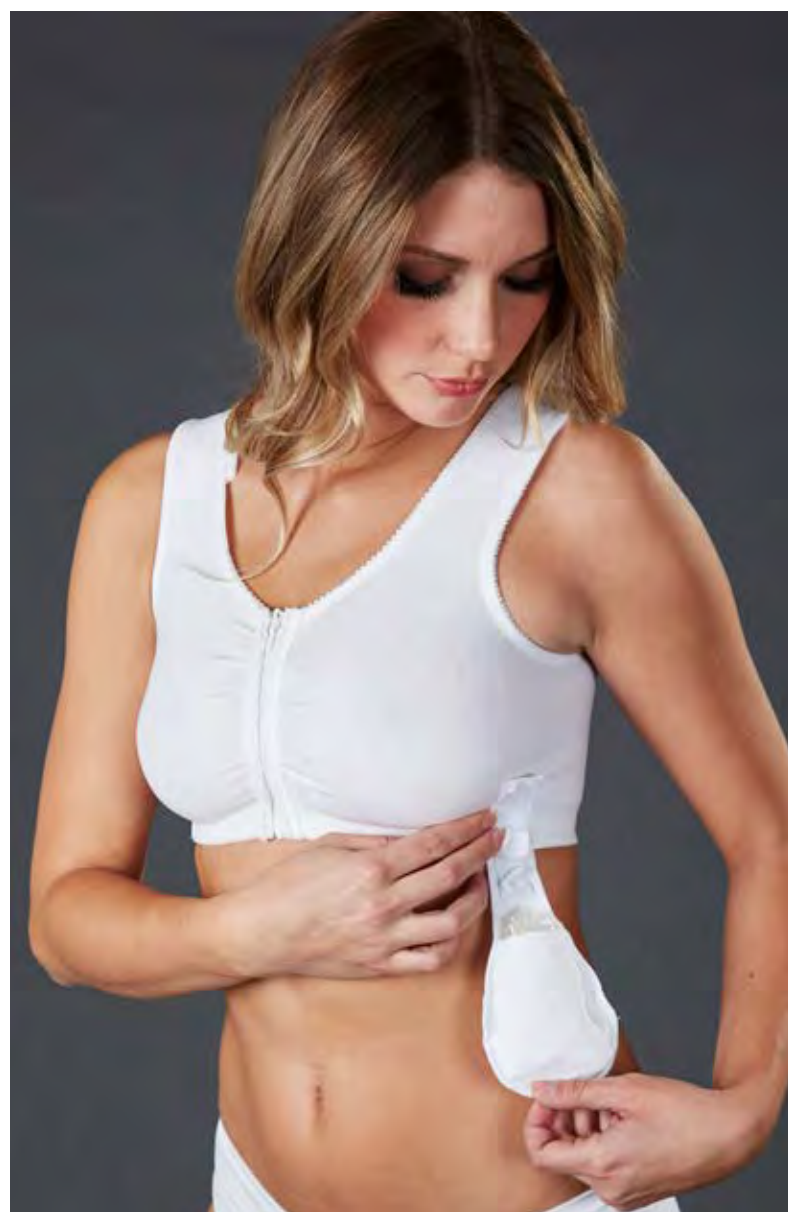
Cotton/Spandex

First Impression Bra (by AAdvantage)

226-230

Sizes: S - 2XL

Item	Size	Chest (in.)
226	S	32-34
227	M	34.5-36
228	L	36.5-38
229	XL	38.5-40
230	2XL	40.5+



Colors

White

Fabrics

Nylon/Lycra®

Features

- Provides maximum support to the chest
- Seamless one-piece design fully covers and protects incision area
- Front zipper closure for easy application
- Velcro® straps for post-op inspection and adjustability
- Removable pouch with Velcro® strap attachment for drain or pain pump

Ideal for

- Lumpectomy
- Mastectomy
- Breast Reconstruction
- Breast Reduction
- Breast Augmentation

First Choice Bra (by AAdvantage)

517-523

Sizes: S - 4XL



Item	Size	Chest (in.)
517	S	32-34
518	M	34.5-36
519	L	36.5-38
520	XL	38.5-40
521	2XL	40.5-42
522	3XL	42.5-44
523	4XL	44.5-46



Features

- Provides full coverage and maximum support to the chest
- 3-Piece cups with flat seams
- Hook & eye front closure for easy application
- Wide, plush elastic band for stability
- Back reinforcement panel
- Velcro® straps for post-op inspection and adjustability
- Removable pouch with Velcro® strap attachment for drain or pain pump

Ideal for

- Lumpectomy
- Mastectomy
- Breast Reconstruction
- Breast Reduction
- Breast Augmentation

Colors

White

Fabrics

Nylon/Lycra®



SC-400

Sizes: 2XS - 3XL

Black



Size	Chest (in.)
2XS	28-30
XS	30-32
S	32-34
M	36-38
L	40-42
XL	44-46
2XL	48-50
3XL	51-54

Features

- Provides maximum compression and support to the chest
- Double-ply, molded seamless cup design
- Hook & eye shoulder straps for easy post-op inspection and adjustability
- Triple row hook & eye front closure for easy application and added adjustability
- Built-in pouches for use with prosthetics
- Extra-wide bottom band for stability and additional comfort
- Featuring a longer torso fit to avoid interference with incision sites
- Cotton fabric for extra patient comfort and breathability

Ideal for

- Breast Reconstruction
- Breast Reduction
- Breast Augmentation

Colors

Black

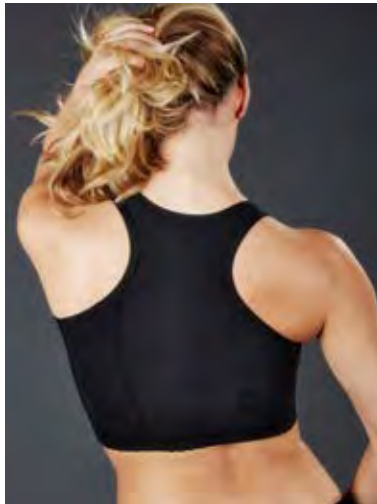
Fabrics

Cotton/Spandex

SuperSilky Compression Bra

SC-410

Sizes: XS - 3XL



Size	Chest (in.)
XS	30-32
S	32-34
M	36-38
L	40-42
XL	44-46
2XL	48-50
3XL	51-54

Colors

Black

Beige

Fabrics

SuperSilky

Features

- Provides maximum compression and support to the chest
- Double ply, seamless cup with a racer back design
- Hook & eye shoulder straps for post-op inspection and adjustability
- Triple row hook & eye front closure for easy application and added adjustability
- Built-in pouches for use with prosthetics
- Extra-wide bottom band for stability and additional comfort

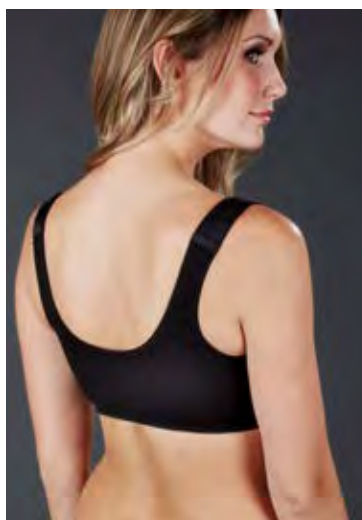
Ideal for

- Breast Reconstruction
- Breast Reduction
- Lumpectomy
- Breast Augmentation

Sculptures[®]
compression wear

SC-415

Sizes: XS - 2XL



Size	Chest (in.)
XS	30-32
S	32-34
M	36-38
L	40-42
XL	44-46
2XL	48-50

Features

- Provides light compression to the chest
- Universal cup design with lace trim
- Double row hook & eye front closure for easy application and adjustability
- Hook & eye shoulder straps for post-op inspection and adjustability
- Wide front breast band for additional support and stability

Ideal for

- Breast Augmentation
- Sleep Bra

Colors

Black

Fabrics

Cotton/Spandex

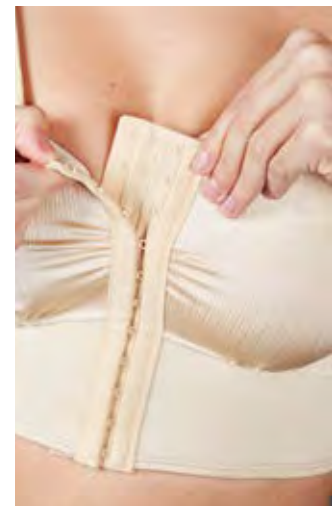
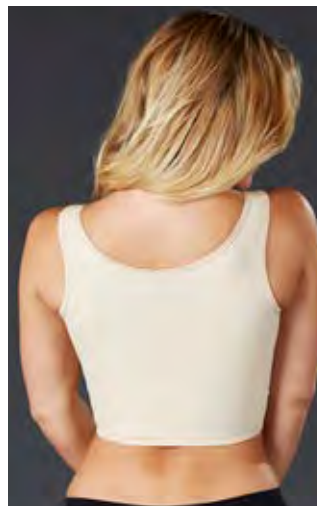
Female Bra Vest

SC-480

Sizes: S - 2XL



Size	Chest (in.)
S	32-34
M	36-38
L	40-42
XL	44-46
2XL	48-50



Colors

Beige

Fabrics

Sateen

Features

- Provides full coverage and maximum support to the chest and upper back
- Double ply, universal cup design
- Hook & eye shoulder straps for easy post-op inspection and adjustability
- Unique graded extra wide front bottom band design avoids interruption with incision sites
- Triple row hook & eye front closure for easy application and added adjustability

Ideal for

- Breast Reconstruction
- Breast Reduction
- Breast Augmentation
- Mastopexy
- Liposuction to the anterior and lateral auxiliary folds

CAROMED®

Waistbinder Collection



3-8037-12



3-8504-12

Unisex One-Flap Waistbinder

White:

3-8004 9" width

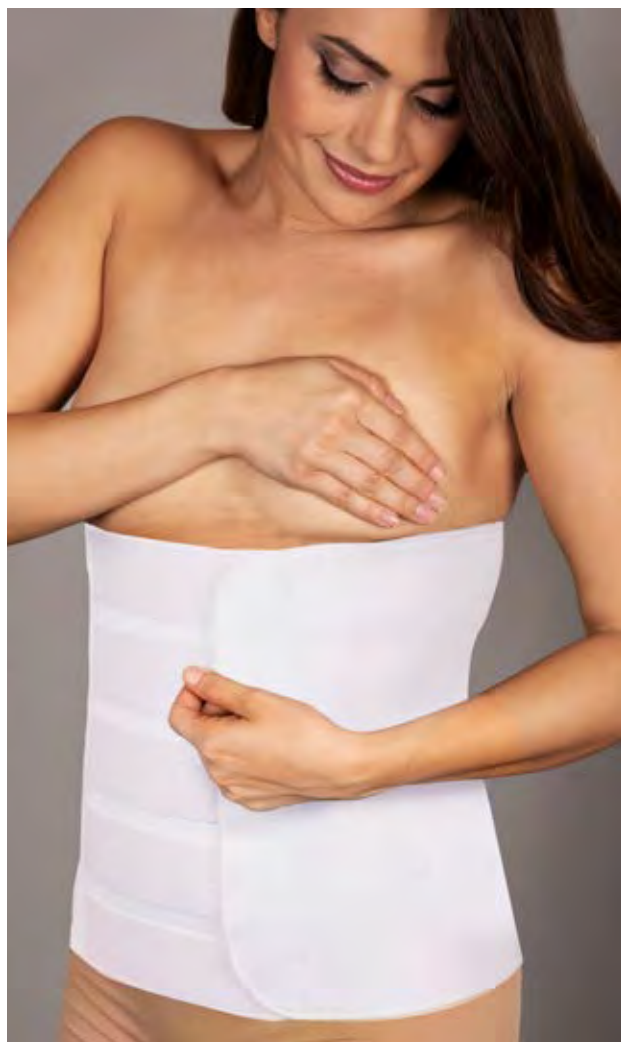
3-8004 12" width

Black:

3-8504 9" width

3-8504 12" width

Sizes: XS - 3XL



3-8004-12



X-brace design for stability

Size	Waist	
	Inches	Centimeters
XS	22-24	55.9-61
S	26-28	66-71.1
M	30-36	76.2-91.4
L	38-42	96.5-106.7
XL	44-46	111.8-116.8
2XL	47-48	119.4-121.9
3XL	50-51	127-129.5

Features

- Provides maximum support and compression to the abdomen
- Moisture wicking, cotton lining for comfort and smooth contact with skin
- Stacked horizontal Velcro® attachments for a greater range of adjustability and increased conformity
- X-brace design across back panel to stabilize positioning
- Vertical side stays to minimize rollover

Ideal for

- Abdominoplasty
- Liposuction of the abdomen and flanks
- Hernias

Colors

White

Black

Fabrics

Cotton/Nylon/Spandex



3-8027-9

Unisex Multi-Flap Waistbinder



3-8527-9



X-brace design for stability

White:

3-8027 9" width

3-8037 12" width

Black:

3-8527 9" width

3-8537 12" width

3-8547 15" width

Sizes: XS - 3XL

Size	Waist	
	Inches	Centimeters
XS	22-24	55.9-61
S	26-28	66-71.1
M	30-36	76.2-91.4
L	38-42	96.5-106.7
XL	44-46	111.8-116.8
2XL	47-48	119.4-121.9
3XL	50-51	127-129.5

Features

- Provides maximum support and compression to the abdomen
- Multi-flap designs allows for greater contouring and adjustability
- Moisture wicking, cotton lining for comfort and smooth contact with skin
- Stacked horizontal Velcro® attachments for a greater range of adjustability and increased conformity
- X-brace design across back panel for stabilization
- Vertical side stays to minimize rollover
- Can be used with drainage tubing

Ideal for

- Abdominoplasty
- Liposuction of the abdomen and flanks
- Hernias

Colors

White

Black

Fabrics

Cotton/Nylon/Spandex

CAROMED®



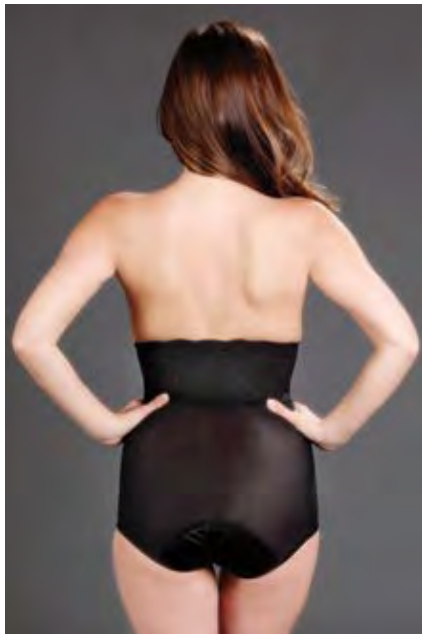
Girdle/Shapers Collection



Female Abdominoplasty Garment

3-8005

Sizes: XS - 3XL



Size	Inches		Centimeters	
	Hip	Waist	Hip	Waist
XS	31 - 33	23 - 25	83.8	58.4-63.5
S	34 - 36	25 - 27	86.4-91.4	63.5-68.6
M	37 - 39	27 - 29	94.0-99.1	68.6-73.7
L	40 - 42	30 - 32	101.6-106.7	76.2-81.3
XL	43 - 45	33 - 36	109.2-114.3	83.8-91.4
2XL	45 - 48	37- 40	114.3-121.9	94.0-101.6
3XL	49 - 53	40 - 44	124.5-134.6	101.6-111.8

Colors

Black

Champagne

Fabrics

Powerknit

Features

- Provides maximum support and compression to the abdomen
- 4" anti-roll waistband with lace overlay
- Full length, bilateral hook & eye beneath separating zippers
- Double-ply front reinforcement panel
- Flap-over Velcro® crotch for stability and added convenience
- Slit opening in crotch flap to accommodate urinary catheters

Ideal for

- Abdominoplasty
- Liposuction of the abdomen

Adjustable Abdominoplasty Garment

3-8025

Sizes: XS - 2XL



Size	Inches		Centimeters	
	Hip	Waist	Hip	Waist
XS	33-34	23-24	83.8-86.4	58.4-61
S	35-36	25-26	88.9-91.4	63.5-66
M	37-38	27-28	94-96.5	68.6-71.1
L	40-43	30-33	101.6-109.2	76.2-83.8
XL	44-46	34-36	111.8-116.8	86.4-91.4
2XL	48-50	38-40	121.9-127	96.5-101.6

Features

- Powerknit back and bottom girdle combined with a front waistbinder
- Provides maximum support and compression to the upper and lower abdomen
- Adjustable, cotton-lined Velcro® flaps for complete contouring
- Flap over Velcro® crotch for stability and added convenience
- Slit opening in crotch flap to accommodate urinary catheters

Ideal for

- Abdominoplasty
- Liposuction of the abdomen, hips and flanks

Colors

Black

Fabrics

Powerknit



4-4012



4-4000

Powerknit Suspendered Girdle

Order by Length:

4-4000 Capri

4-4010 Legless

4-4012 Above the Knee

Sizes: XS - 2XL

4-4010



Size	Inches		Centimeters	
	Hip	Waist	Hip	Waist
XS	33-34	23-24	83.8-86.4	58.4-61
S	35-36	25-26	88.9-91.4	63.5-66
M	37-38	27-29	94-96.5	68.6-73.7
L	40-43	30-33	101.6-109.2	76.2-83.8
XL	44-46	35-38	111.8-116.8	88.9-96.5
2XL	48-50	39-43	121.9-127	99.1-109.2

Features

- Provides uninterrupted compression to the full abdomen, hips and lower body
- Strategically placed reinforcement panels provide radial compression to help lift and contour the gluteal area
- Bilateral, padded hook & eye beneath zippers (4-4010 & 4-4012 feature fully separating zippers; 4-4000 features non-separating zippers)
- Detachable and adjustable straps
- Gripper lace on leg cuff to maintain placement
- Open crotch design for 4-4000 and 4-4012
- Reclosable flap over crotch design for 4-4010

Ideal for

- Liposuction of the abdomen and flanks
- Liposuction of the hips and lower body
- Abdominoplasty
- Gluteal fat transfer

Colors

Black

Champagne

Fabrics

Powerknit



4-4700

Suspended Brazilian Lift Garment

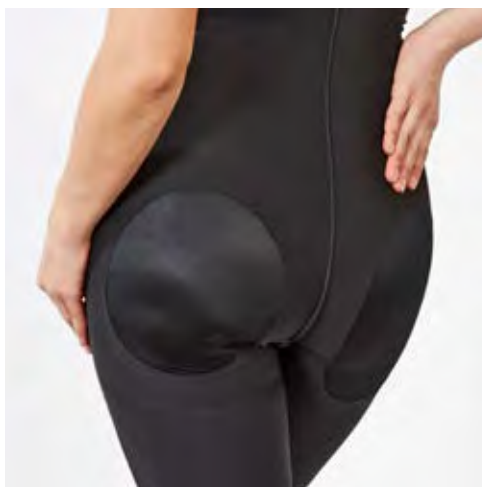


Order by Length:

4-4700 Capri

4-4712 Above the Knee

Sizes: XS - 2XL



Size	Inches		Centimeters	
	Hip	Waist	Hip	Waist
XS	33-34	23-24	83.8-86.4	58.4-61
S	35-36	25-26	88.9-91.4	63.5-66
M	37-38	27-28	94-96.5	68.6-71.1
L	40-43	30-33	101.6-109.2	76.2-83.8
XL	44-46	34-36	111.8-116.8	86.4-91.4
2XL	48-50	38-40	121.9-127	96.5-101.6

Features

- Provides uninterrupted compression to the full abdomen, lower body and areas surrounding the gluteal cutouts
- Strategically placed reinforcement panels under the buttocks provide extra lift and support
- Bilateral, padded hook & eye beneath zippers
- (4-4712 has fully separating zippers; 4-7000 has non-separating zippers)
- Detachable and adjustable straps
- Gripper lace on leg cuff to maintain placement
- Open crotch design

Ideal for

- Brazilian Butt Lifts
- Gluteal Implants
- Natural Fat Transfer to the Buttocks
- Liposuction of the abdomen, flanks and lower body

Colors

Black

Fabrics

Powerknit



4-8000



4-8012

Powerknit Girdle

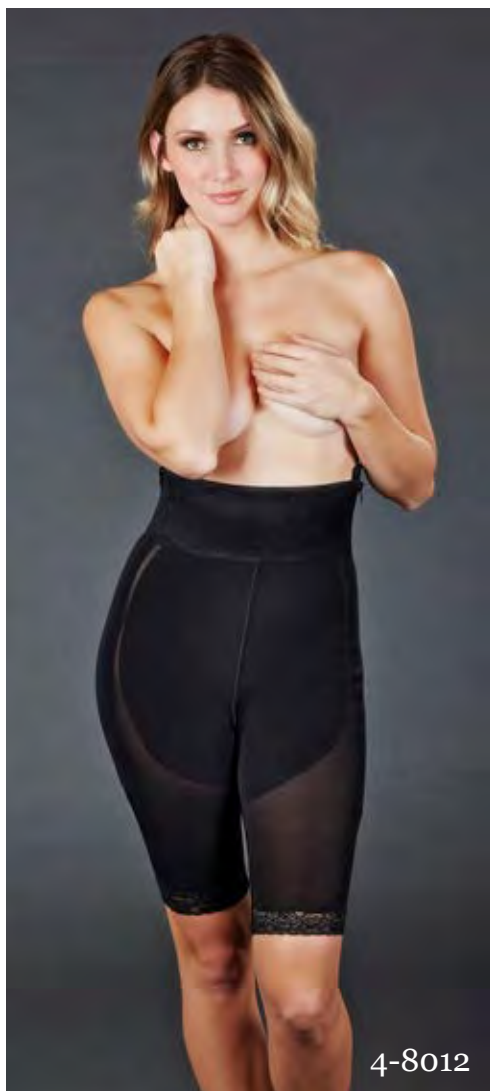
Order by Length:

4-8000 Capri

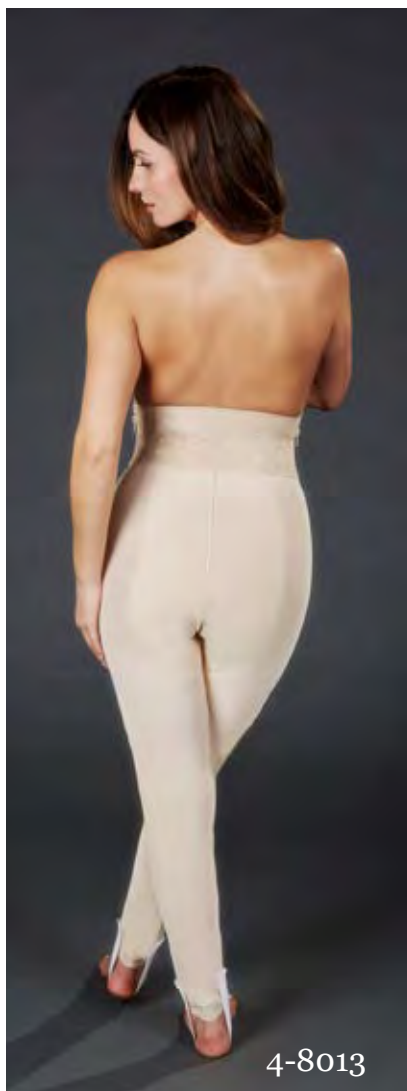
4-8012 Above the Knee

4-8013 Ankle Length

Sizes: XS - 3XL



4-8012



4-8013

Size	Dress Size	Waist (in.)	Hips (in.)
XS	0-2	23-25	31-33
S	4-6	25-27	34-36
M	8-10	27-29	37-39
L	12-14	30-32	40-42
XL	14-16	33-36	43-45
2XL	18	37-40	45-48
3XL	20	40-44	49-53

Features

- Provides radial compression to the abdomen, hips and lower body
- Front and back reinforcement panels for added compression to the abdomen and inner thighs
- 4" plush anti-roll waistband with lace overlay
- Bilateral padded hook & eye beneath non-separating zippers
- Gripper lace on leg cuffs to maintain proper placement
- Open crotch design

Ideal for

- Liposuction of the abdomen
- Liposuction of the hips and lower body
- Abdominoplasty

Colors

Black

Champagne

Fabrics

Powerknit

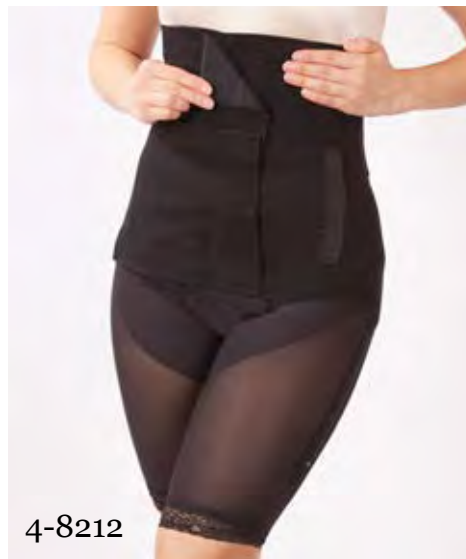
Abdomino/Lipo Combination Girdles

Order by Length:

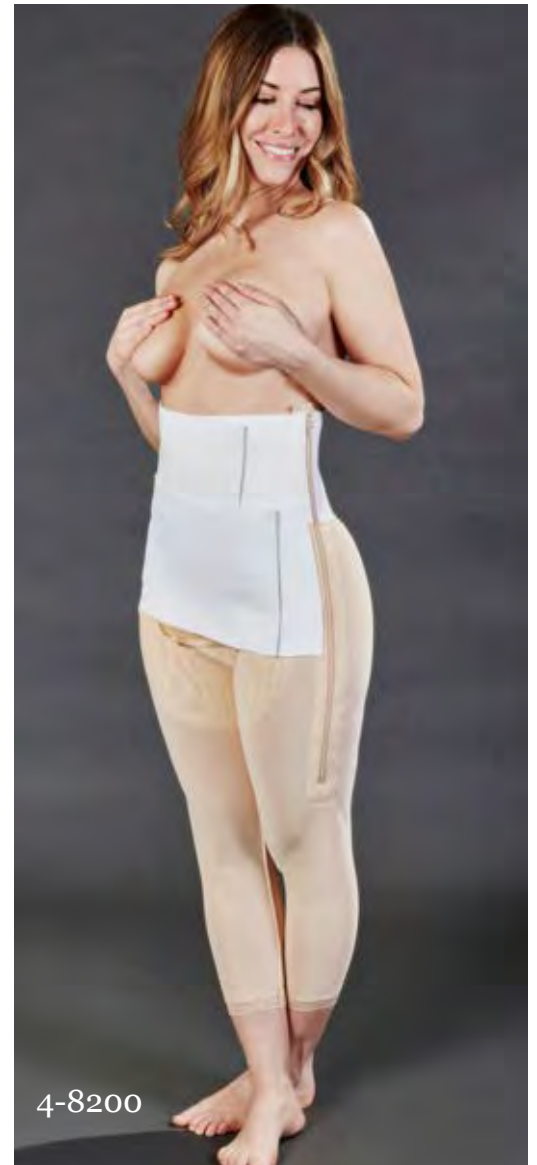
4-8200 Capri

4-8212 Above the Knee

Sizes: XS - 2XL



Size	Inches		Centimeters	
	Hip	Waist	Hip	Waist
XS	33-34	23-24	83.8-86.4	58.4-61
S	35-36	25-26	88.9-91.4	63.5-66
M	37-38	27-28	94-96.5	68.6-71.1
L	40-43	30-33	101.6-109.2	76.2-83.8
XL	44-46	34-36	111.8-116.8	86.4-91.4
2XL	48-50	38-40	121.9-127	96.5-101.6



Colors

Black

Champagne

Fabrics

Powerknit

Features

- Powerknit girdle combined with a front multi-flap waistbinder
- Provides maximum support and compression to the abdomen and lower body
- Padded hook & eye beneath bilateral, non-separating side zippers
- Gripper lace on legs to maintain proper placement
- Open crotch design

Ideal for

- Abdominoplasty
- Liposuction of the abdomen and hips
- Liposuction of the lower body

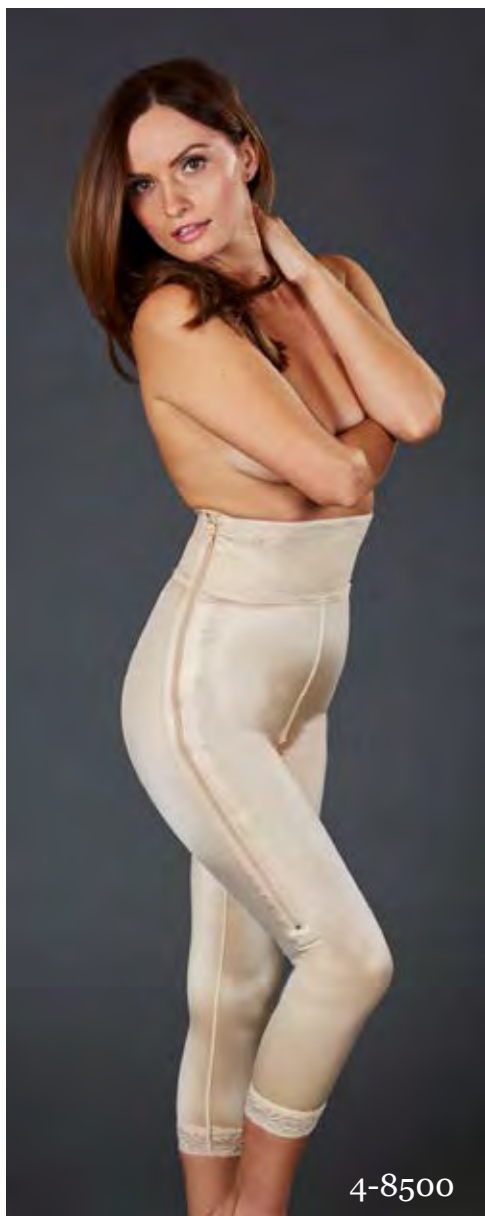
Satin Girdles

Order by Length:

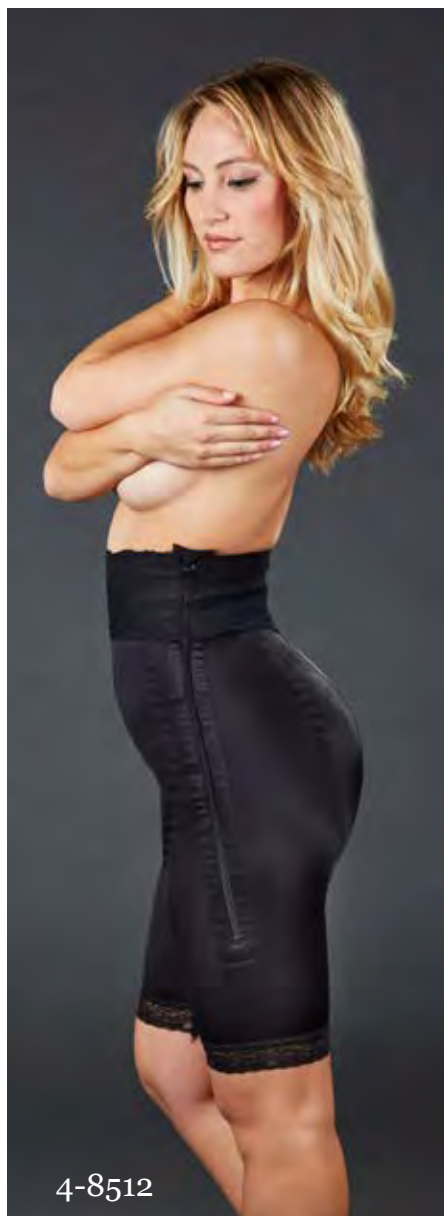
4-8500 Capri

4-8512 Above the Knee

Sizes: XS - 2XL



4-8500



4-8512

Size	Inches		Centimeters	
	Hip	Waist	Hip	Waist
XS	31 - 33	23 - 25	83.8	58.4-63.5
S	34 - 36	25 - 27	86.4-91.4	63.5-68.6
M	37 - 39	27 - 29	94.0-99.1	68.6-73.7
L	40 - 42	30 - 32	101.6-106.7	76.2-81.3
XL	43 - 45	33 - 36	109.2-114.3	83.8-91.4
2XL	45 - 48	37 - 40	114.3-121.9	94.0-101.6

Features

- Provides radial compression to the abdomen, hips and lower body
- Front and back reinforcement panels for added compression
- 4" plush anti-roll waistband with lace overlay
- Bilateral padded hook & eye beneath non-separating zippers
- Gripper lace on leg cuffs to maintain proper placement
- Open crotch design

Ideal for

- Abdominoplasty
- Liposuction of the abdomen
- Liposuction of the hips and lower body

Colors

Black

Champagne

Fabrics

Satin/Spandex

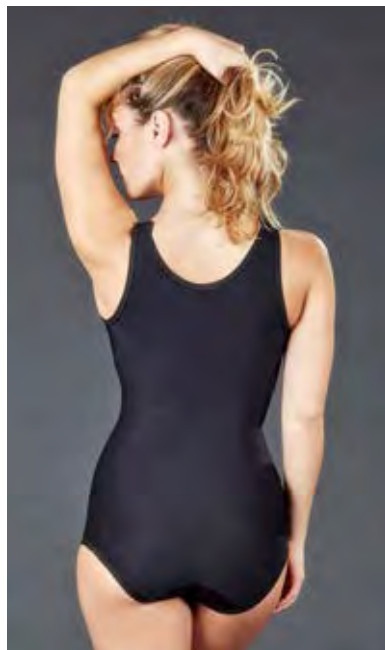
Abdominoplasty Body Shaper

SC-25

Sizes: XS - 3XL

3XL only available in Black.

Size	Dress Size	Waist (in.)	Hips (in.)
XS	0-2	23-25	31-33
S	4-6	25-27	34-36
M	8-10	27-29	37-39
L	12-14	30-32	40-42
XL	14-16	33-36	43-45
2XL	18	37-40	45-48
3XL	20	40-44	49-53



Colors

Black

Beige

Fabrics

Sateen

Features

- Provides heavy uniform, uninterrupted compression to the full abdominal area and full back
- Built-in bra provides light to mid-weight compression to the breasts
- Adjustable hook & eye shoulder straps for easy post-op examination
- Padded hook & eye beneath a single fully separating side zipper
- Hook & eye reclosable crotch for stability and added convenience
- By design, the SC-25 opens completely so staff can easily “roll” patients into the garment in the OR

Ideal for

- Mommy Makeover (Breast Lift, Tummy Tuck combo)
- Breast Lifts
- Breast Augmentations
- Abdominoplasty procedures
- Liposuction of the abdomen and full back

Sculptures[®]
compression wear

SC-25F

Sizes: XS - 2XL



Size	Dress Size	Waist (in.)	Hips (in.)
XS	0-2	23-25	31-33
S	4-6	25-27	34-36
M	8-10	27-29	37-39
L	12-14	30-32	40-42
XL	14-16	33-36	43-45
2XL	18	37-40	45-48



Features

- Provides uniform, uninterrupted compression to the full abdominal area and upper and lower back
- Built-in bra offers light compression to the chest
- Single front zipper closure is ideal when working on flanks and hips
- Back reinforcement panel for added support and compression
- Adjustable hook & eye shoulder straps
- Reclosable Velcro crotch for stability and added convenience

Ideal for

- Mommy Makeover (Breast Lift, Tummy Tuck combo)
- Abdominoplasty procedures
- Liposuction of the abdomen, flanks and full back

Colors

Black

Fabrics

Sateen

Body Shapers

Order by Length:

SC-250 Above the Knee

SC-255 Below the Knee

Sizes: XS - 2XL

SC-250 is available in Size 3XL in Black.

Petites are also available for patients 5'3" and under in Black.

Size	Dress Size	Waist (in.)	Hips (in.)
XS	0-2	23-25	31-33
S	4-6	25-27	34-36
M	8-10	27-29	37-39
L	12-14	30-32	40-42
XL	14-16	33-36	43-45
2XL	18	37-40	45-48
3XL	20	40-44	49-53



SC-250



SC-255

Colors

Black

Beige

Fabrics

Sateen

Features

- Provides uniform, uninterrupted compression to the full abdominal area, back and lower body
- Built-in bra offers light compression to the chest
- Padded hook & eye beneath single side zipper
- Rear reinforcement panel for additional compression of the upper and lower back
- Adjustable hook & eye shoulder straps
- Open crotch for added convenience
- Our petite-friendly version is cut shorter in the torso and made with a modified tighter fit on the legs.

Ideal for

- Abdominoplasty procedures
- Liposuction of the full abdominal area, back and lower body
- Natural Fat Transfer to the breast
- Breast Augmentations

Sculptures[®]
compression wear

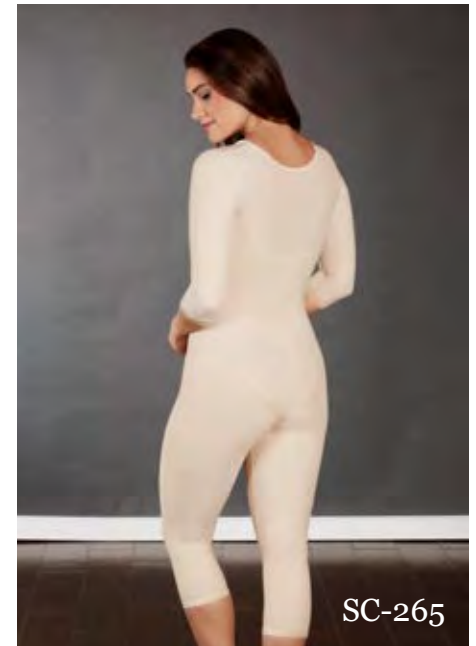
Order by Length:

SC-26 Abdominoplasty with Sleeves

SC-260 Above the Knee with Sleeves

SC-265 Below the Knee with Sleeves

Sizes: XS - 2XL



Size	Dress Size	Waist (in.)	Hips (in.)	Bicep (in.)
XS	0-2	23-25	31-33	9.5
S	4-6	25-27	34-36	10
M	8-10	27-29	37-39	11
L	12-14	30-32	40-42	12
XL	14-16	33-36	43-45	13
2XL	18	37-40	45-48	14.5

Features

- Provides heavy compression to the arms, full abdominal area, back and lower body
- Built-in bra offers light compression to the chest
- Seams placed on the top of the 3/4 length arm sleeves to avoid any disruptions to surgical sites
- Padded hook & eye beneath single front zipper
- Rear reinforcement panel for additional compression to the torso
- SC-26 has a hook & eye reclose-able crotch
- SC-260 and SC-265 feature an open crotch design for added convenience

Ideal for

- Abdominoplasty
- Brachioplasty
- Liposuction of the arms, axilla and back
- Liposuction of the full abdominal area and lower body
- Natural Fat Transfer to the breast

Colors

Black

Beige

Fabrics

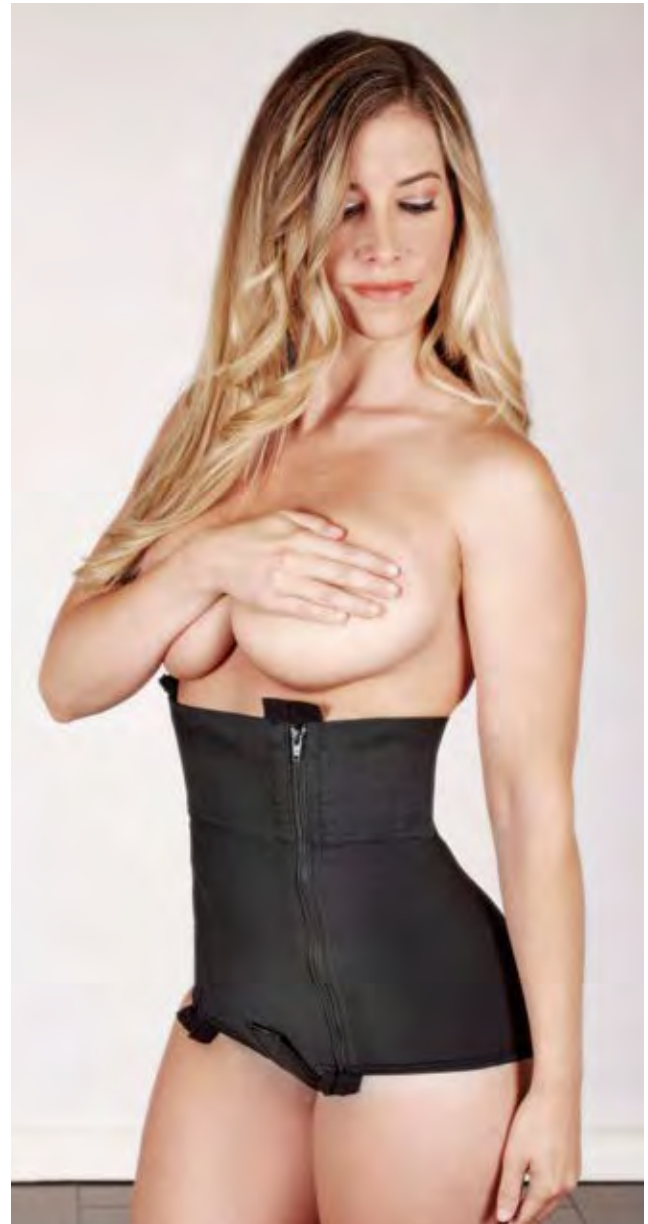
Sateen

Abdominoplasty Girdle

SC-200

Sizes: XS - 6XL

4XL - 6XL only available in Beige.



Size	Dress Size	Waist (in.)	Hips (in.)
XS	0-2	23-25	31-33
S	4-6	25-27	34-36
M	8-10	27-29	37-39
L	12-14	30-32	40-42
XL	14-16	33-36	43-45
2XL	18	37-40	45-48
3XL	20	40-44	49-53
4XL	22-24	45-49	54-58
5XL	26-28	50-55	59-63
6XL	30+	56+	64+

Colors

Black

Beige

Fabrics

Sateen

Features

- Provides maximum support and compression to the abdomen and lower flanks
- Full length, bi-lateral hook & eye beneath fully separating zippers
- Double-ply front reinforcement panel
- 4" plush anti-roll waistband
- Flap over, cotton crotch with Velcro closure for stability and added convenience
- Slit opening in cotton crotch flap to accommodate urinary catheters

Ideal for

- Abdominoplasty
- Liposuction of the abdomen and lower flank

High Back Abdominoplasty Girdle

SC-31

Sizes: XS - 2XL



Size	Dress Size	Waist (in.)	Hips (in.)
XS	0-2	23-25	31-33
S	4-6	25-27	34-36
M	8-10	27-29	37-39
L	12-14	30-32	40-42
XL	14-16	33-36	43-45
2XL	18	37-40	45-48

Features

-

Ideal for

- Abdominoplasty
- Liposuction of the abdomen and lower flanks

Colors

- Black
- Beige

Fabrics

- Sateen

Non-Separating Zipper Girdles

Order by Length:

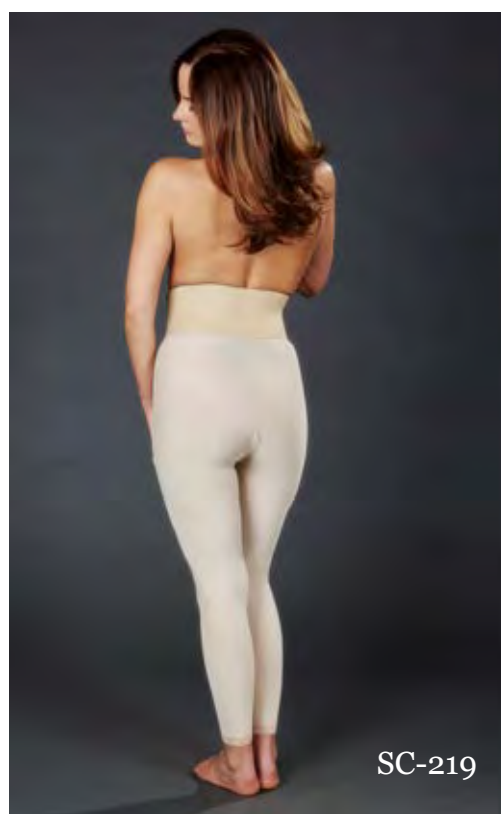
SC-210 Above the Knee

SC-215 Below the Knee

SC-219 Ankle Length

Sizes: XS - 2XL

SC-219 is only available in Beige.



Colors

Black

Beige

Fabrics

SuperSilky

Features

- Provides radial compression to the abdomen, hips and lower body
- Front reinforcement panel for added compression
- 4" Anti-roll waistband
- Bilateral padded hook & eye beneath non-separating zippers
- Lace on leg cuffs
- Open crotch design

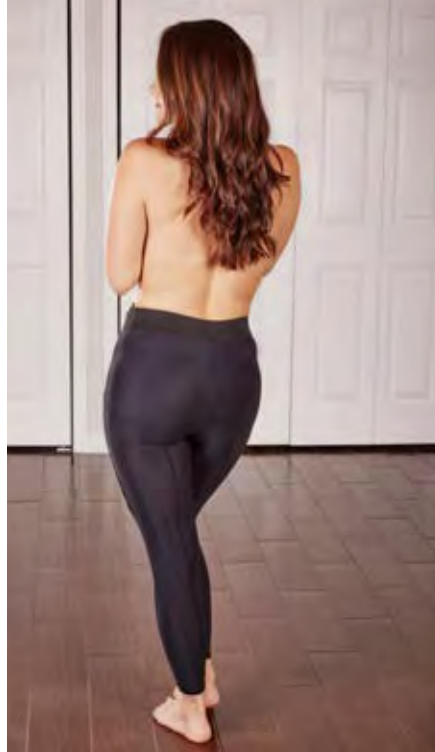
Ideal for

- Liposuction of the abdomen
- Liposuction of the hips and lower body
- Abdominoplasty

Size	Dress Size	Waist (in.)	Hips (in.)
XS	0-2	23-25	31-33
S	4-6	25-27	34-36
M	8-10	27-29	37-39
L	12-14	30-32	40-42
XL	14-16	33-36	43-45
2XL	18	37-40	45-48

SC-218

Sizes: XS - 3XL



Size	Dress Size	Waist (in.)	Hips (in.)	Thighs (in.)
XS	0-2	23-25	31-33	18-20
S	4-6	25-27	34-36	20-22
M	8-10	27-29	37-39	22.5-24
L	12-14	30-32	40-42	24.5-26
XL	14-16	33-36	43-45	26.5-28.5
2XL	18	37-40	45-48	29-30.5
3XL	20	40-44	49-53	31-33

Features

- Provides enhanced compression to the inner thigh and uninterrupted compression to the lower abdomen, hips and legs
- Seams purposely placed away from the inner thigh seam to avoid the incision site
- Padded hook & eye beneath non-separating bilateral zippers
- 2" Plush anti-roll waistband
- Open crotch for added convenience

Ideal for

- Thigh lifts
- Liposuction of the legs

Colors

Black

Fabrics

SuperSilky

Separating Zipper Girdles

Order by Length:

SC-220 Above the Knee

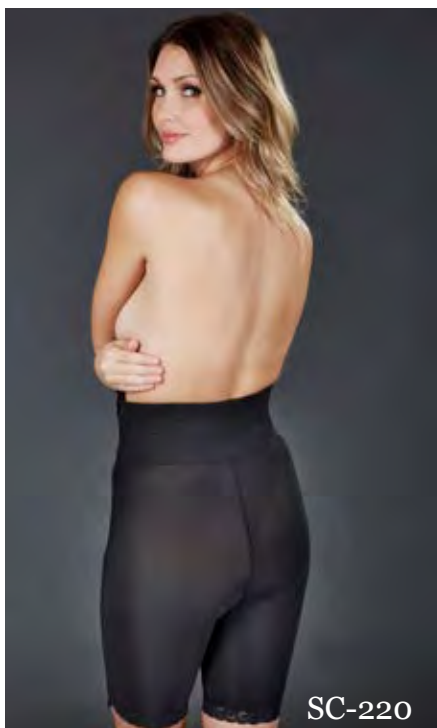
SC-225 Below the Knee

Sizes: XS - 3XL

SC-225 size 3XL only
available in Beige.



Fully separating zippers



Size	Dress Size	Waist (in.)	Hips (in.)
XS	0-2	23-25	31-33
S	4-6	25-27	34-36
M	8-10	27-29	37-39
L	12-14	30-32	40-42
XL	14-16	33-36	43-45
2XL	18	37-40	45-48
3XL	20	40-44	49-53

Colors

Black

Beige

Fabrics

SuperSilky

Features

- Provides radial compression to the abdomen, hips and lower body
- Front reinforcement panel for added compression
- 4" Anti-roll waistband
- Bilateral padded hook & eye beneath fully separating zippers so patients can "roll" into the garment
- Gripper lace on leg cuffs
- Open crotch design

Ideal for

- Liposuction of the abdomen, hips and lower body
- Abdominoplasty

Sculptures[®]
compression wear



Order by Length:

SC-230 Above the Knee

SC-235 Below the Knee

Sizes: XS - 6XL

SC-230 girdles are only available up to size 2XL.

Size	Dress Size	Waist (in.)	Hips (in.)
XS	0-2	23-25	31-33
S	4-6	25-27	34-36
M	8-10	27-29	37-39
L	12-14	30-32	40-42
XL	14-16	33-36	43-45
2XL	18	37-40	45-48
3XL	20	40-44	49-53
4XL	22-24	45-49	54-58
5XL	26-28	50-55	59-63
6XL	30+	56+	64+

Features

- Provides radial compression to the full abdomen, hips and lower body
- Front reinforcement panel for added compression
- 6" Plush anti-roll waistband allows for a high fit on the torso; ideal for taller patients
- Bilateral padded hook & eye beneath non-separating zippers
- Gripper lace on leg cuffs
- Open crotch design

Ideal for

- Liposuction of the abdomen, hips and lower body
- Abdominoplasty

Colors

Beige

Fabrics

SuperSilky

Strapped Girdles

Order by Length:

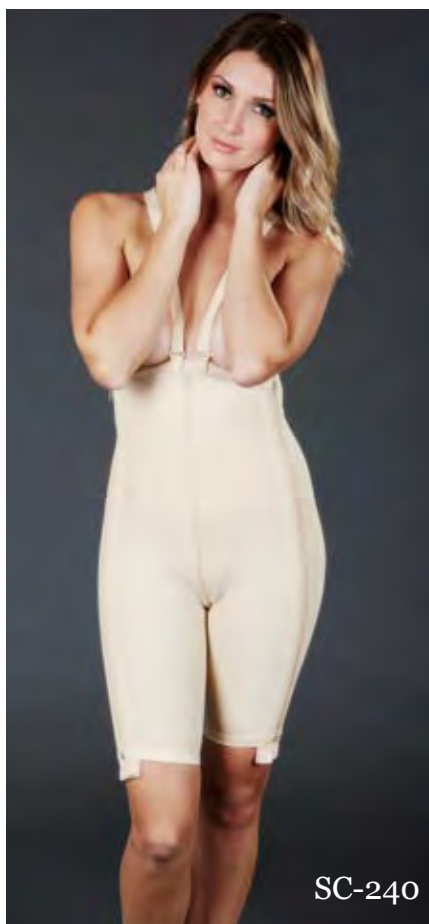
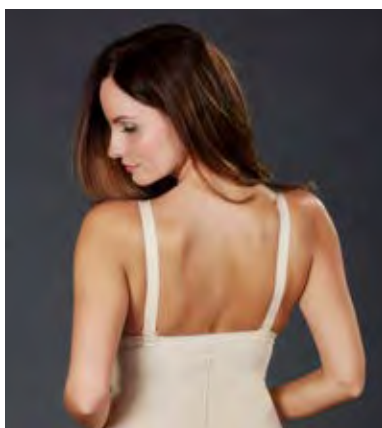
SC-240 Strapped Above the Knee

SC-245 Strapped Below the Knee

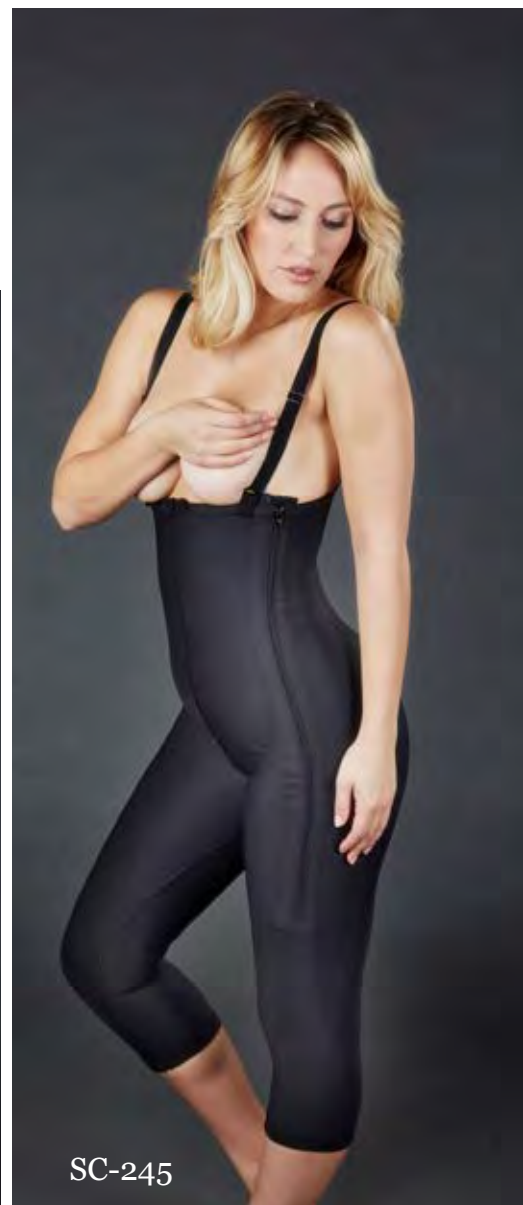
Sizes: XS - 6XL

SC-245 girdles are only available up to size 4XL.

Size 5XL and 6XL garments are only available in Beige.



SC-240



SC-245

Size	Dress Size	Waist (in.)	Hips (in.)
XS	0-2	23-25	31-33
S	4-6	25-27	34-36
M	8-10	27-29	37-39
L	12-14	30-32	40-42
XL	14-16	33-36	43-45
2XL	18	37-40	45-48
3XL	20	40-44	49-53
4XL	22-24	45-49	54-58
5XL	26-28	50-55	59-63
6XL	30+	56+	64+

Colors

Black

Beige

Fabrics

Sateen

Features

- Provides uninterrupted compression to the full abdomen, hips and lower body
- Front reinforcement panel provides radial compression
- Contoured fit that extends high on the torso
- Detachable and adjustable straps that can be fastened in the front or on the sides
- SC-240 has padded hook & eye beneath fully separating, bilateral zippers; SC-245 has padded hook & beneath non-separating zippers
- Non-rolling leg cuff
- Open crotch design

Ideal for

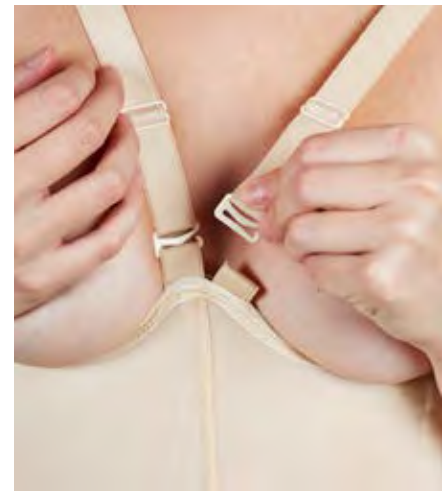
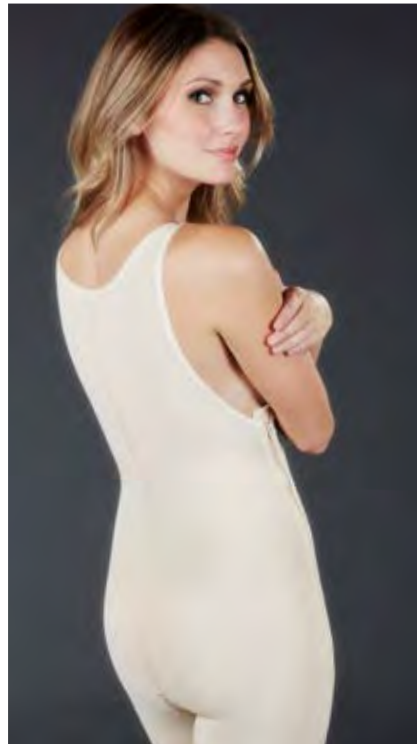
- Liposuction of the abdomen and flanks
- Liposuction of the hips and lower body
- Abdominoplasty

Above the Knee High Back Girdle

SC-310

Sizes: XS - 3XL

Size	Dress Size	Waist (in.)	Hips (in.)
XS	0-2	23-25	31-33
S	4-6	25-27	34-36
M	8-10	27-29	37-39
L	12-14	30-32	40-42
XL	14-16	33-36	43-45
2XL	18	37-40	45-48
3XL	20	40-44	49-53



Features

- Provides uniform compression to the abdomen, back and thighs
- Front reinforcement panel provides radial compression to abdomen
- Padded hook & eye beneath fully separating, bilateral zippers
- Adjustable slide shoulder straps with "Z-hook" attachments for easy application and post-op inspection
- Open crotch design

Ideal for

- Liposuction of the abdomen and full back
- Abdominoplasty

Colors

Beige

Fabrics

SuperSilky

Brazilian Body Shapers

Order by Length:

SC-290 Above the Knee

SC-295 Below the Knee

Sizes: XS - 2XL

SC-295 available in black only.

SC-290 is also available in size 3XL in black.



SC-290

Size	Dress Size	Waist (in.)	Hips (in.)
XS	0-2	23-25	31-33
S	4-6	25-27	34-36
M	8-10	27-29	37-39
L	12-14	30-32	40-42
XL	14-16	33-36	43-45
2XL	18	37-40	45-48
3XL	20	40-44	49-53



SC-295

Colors

Black

Beige

Fabrics

Sateen

Features

- Provides uninterrupted compression to the full abdomen, lower body and areas surrounding the gluteal cutouts
- Gluteal cutouts made with loose stitching to ensure there is no indentation or collapse of the implantation/surgical area
- Back reinforcement panel for additional compression
- Adjustable hook & eye shoulder straps
- Built-in bra offers light compression to the chest
- Padded hook & eye beneath single side zipper
- Open crotch for added convenience

Ideal for

- Brazilian Butt Lifts
- Natural Fat Transfer to the buttocks
- Butt Implants/Augmentation

Sculptures[®]
compression wear



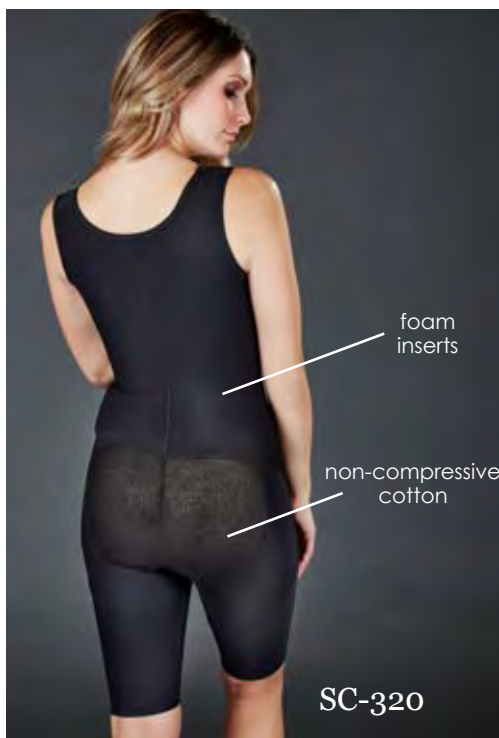
Order by Length:

SC-320 High Back Above the Knee

SC-325 High Back Below the Knee

Sizes: XS - 2XL

Size	Dress Size	Waist (in.)	Hips (in.)
XS	0-2	23-25	31-33
S	4-6	25-27	34-36
M	8-10	27-29	37-39
L	12-14	30-32	40-42
XL	14-16	33-36	43-45
2XL	18	37-40	45-48



Features

- Provides uninterrupted compression to the back, full abdomen, lower body and areas surrounding the buttocks
- Thigh reinforcement panels help lift the buttocks
- Removable foam inserts at the small of the back enhance compression and sculpt the top of the buttocks
- Lightweight, non-compressive cotton gluteal insets help ensure there is no collapse or heightened compression of the gluteal area
- Features an open bust design with triple row hook & eye front closure for increased adjustability
- Hook and eye adjustable shoulder straps
- Open crotch design for added convenience

Ideal for

- Brazilian Butt Lift
- Natural Fat Transfer and Grafting to the buttocks
- Butt Implants/Augmentation
- Liposuction of the abdomen, full back and lower body
- Abdominoplasty procedures

Colors

Black

Fabrics

Sateen



SC-330

Sizes: XS - 2XL



Size	Dress Size	Waist* (in.)	Hips (in.)
XS	0-2	23-25	31-33
S	4-6	25-27	34-36
M	8-10	27-29	37-39
L	12-14	30-32	40-42
XL	14-16	33-36	43-45
2XL	18	37-40	45-48

*Due to the cinched waist design, if you are in between waist sizes please order the next size up.



Features

- Designed by a leading female cosmetic surgeon
- Ultimate garment for Brazilian Butt Lift and fat transfer procedures
- Exaggerated, cinched-in waist with full compression for an hourglass figure
- Lightweight fabric over the hips, buttocks and thighs allows for fat to be transferred to all areas of the hips and buttocks without any indentations
- Open crotch for patient convenience
- Hook and eye beneath a single front zipper closure for easy application
- Detachable shoulder straps

Ideal for

- Brazilian Butt Lift
- Natural Fat Transfer to the buttocks
- Butt Implants

Colors

Black

Fabrics

Sateen



SC-285



SC-280

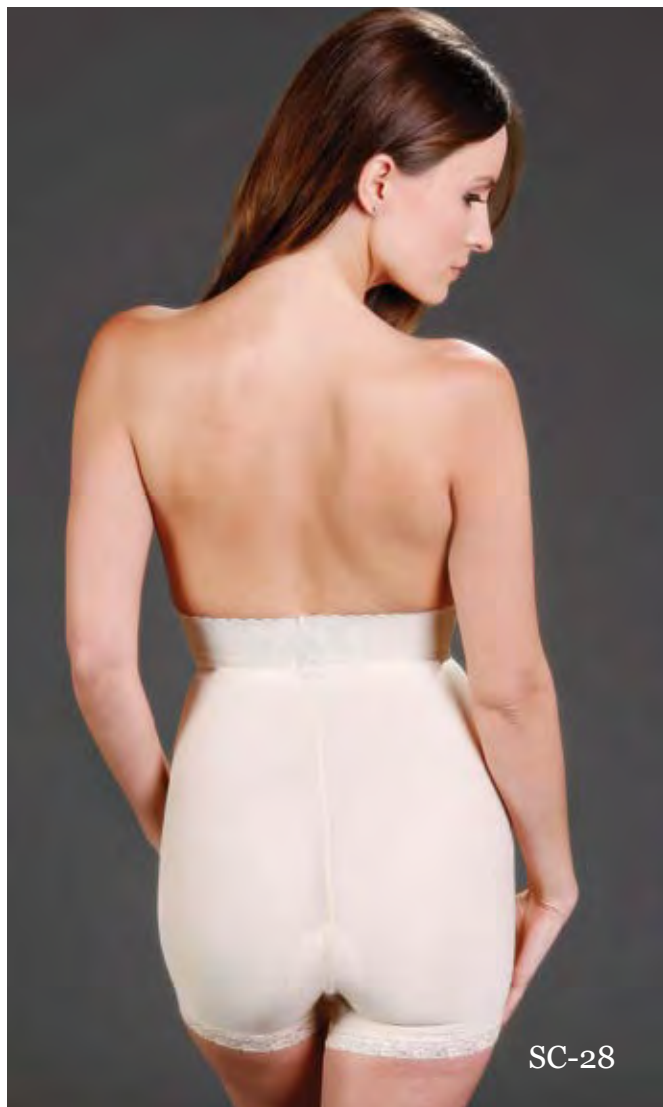
Order by Length:

SC-28 Boy Short

SC-280 Above the Knee

SC-285 Below the Knee

Sizes: XS - 2XL



SC-28



Front reinforcement panel

Size	Dress Size	Waist (in.)	Hips (in.)
XS	0-2	23-25	31-33
S	4-6	25-27	34-36
M	8-10	27-29	37-39
L	12-14	30-32	40-42
XL	14-16	33-36	43-45
2XL	18	37-40	45-48

Features

- Provides radial compression to the abdomen, hips and lower body throughout the extended recovery period
- Front reinforcement panel for added compression
- Pull on design; no hook and eye or zippers
- 2" Plush anti-roll waistband that extends high on the torso
- Lace on leg cuffs
- Open crotch design (Crotches can be sewn closed upon request)
- Ideal for post-natal recovery

Ideal for

- Ideal for the extended recovery period
- Abdominoplasty
- Liposuction of the abdomen and hips
- Liposuction of the lower body

Colors

Black

Beige

Fabrics

SuperSilky



SC-27



SC-270

Order by Length:

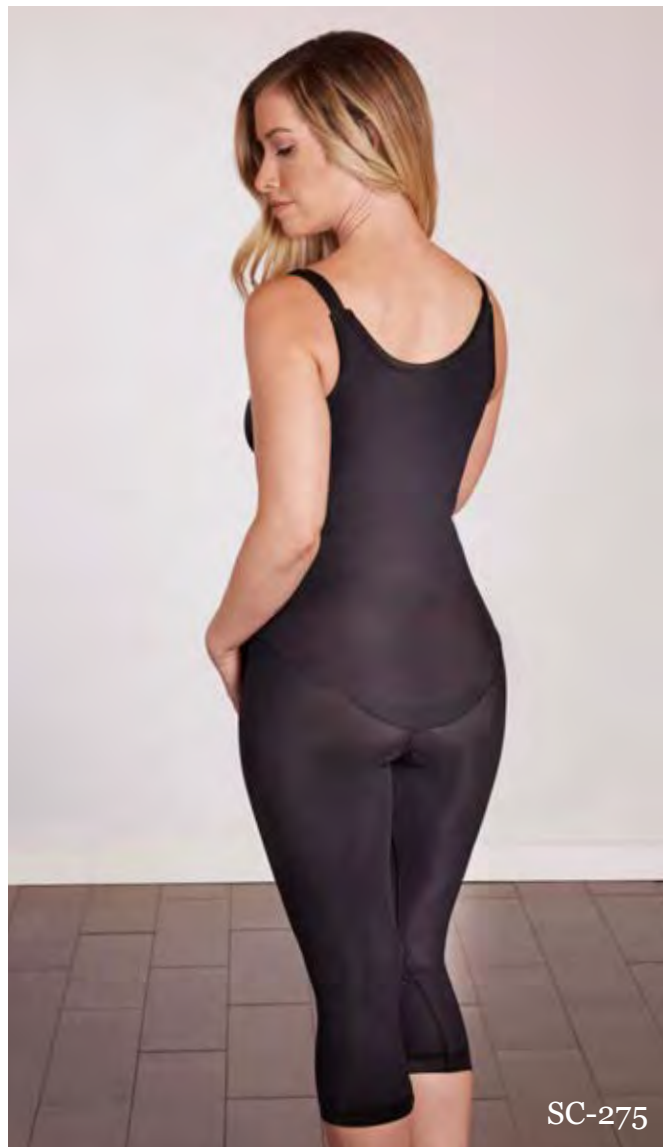
SC-27 Abdominoplasty

SC-270 Above the Knee

SC-275 Below the Knee

Sizes: XS - 2XL

SC-275 available in black only.



Size	Dress Size	Waist (in.)	Hips (in.)
XS	0-2	23-25	31-33
S	4-6	25-27	34-36
M	8-10	27-29	37-39
L	12-14	30-32	40-42
XL	14-16	33-36	43-45
2XL	18	37-40	45-48



Features

- Provides radial compression to the abdomen, hips and lower body throughout the extended recovery period
- Adjustable Z-hook shoulder straps
- Built-in bra offers light compression to the chest
- Pull on design; no hook and eye or zippers
- Hook and eye re-closable crotch design on the SC-27
- Open crotch design on the SC-270 and SC-275 (Crotches can be sewn closed upon request)

Ideal for

- Ideal for the extended recovery period
- Abdominoplasty
- Liposuction of the full abdominal area, back and lower body
- Natural Fat Transfer and Breast Augmentation

Colors

Black

Beige

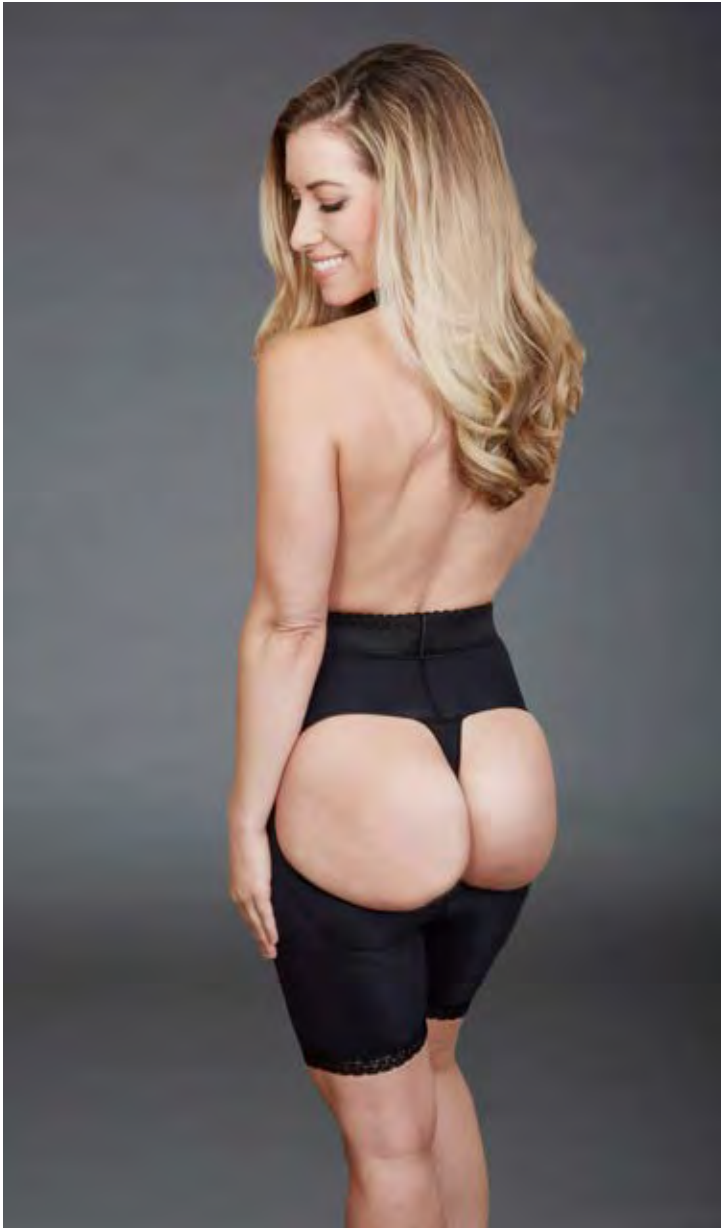
Fabrics

SuperSilky

Stage 2 Brazilian Mid-Thigh Girdle

SC-29

Sizes: XS - 2XL



Size	Dress Size	Waist (in.)	Hips (in.)
XS	0-2	23-25	31-33
S	4-6	25-27	34-36
M	8-10	27-29	37-39
L	12-14	30-32	40-42
XL	14-16	33-36	43-45
2XL	18	37-40	45-48

Colors

Black

Fabrics

SuperSilky

Features

- Provides compression to the abdomen, thighs and areas surrounding the buttocks
- Gluteal cutouts to alleviate compression to the buttock augmentation site
- Stitching around the gluteal cutout is intentionally loose to reduce post-op indentations
- 2" Anti-roll waistband
- Pull on design; no hook and eye or zippers
- Open crotch design

Ideal for

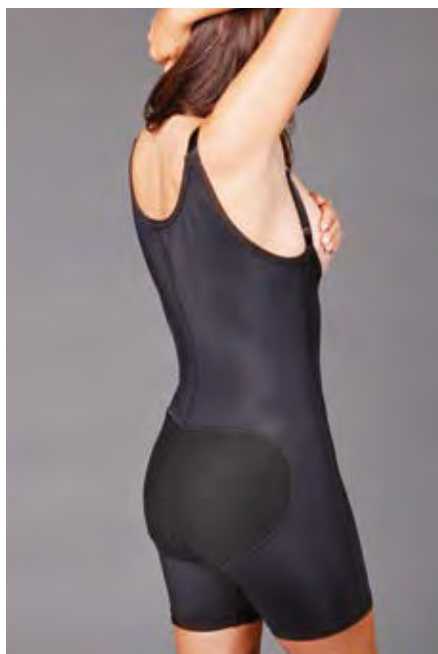
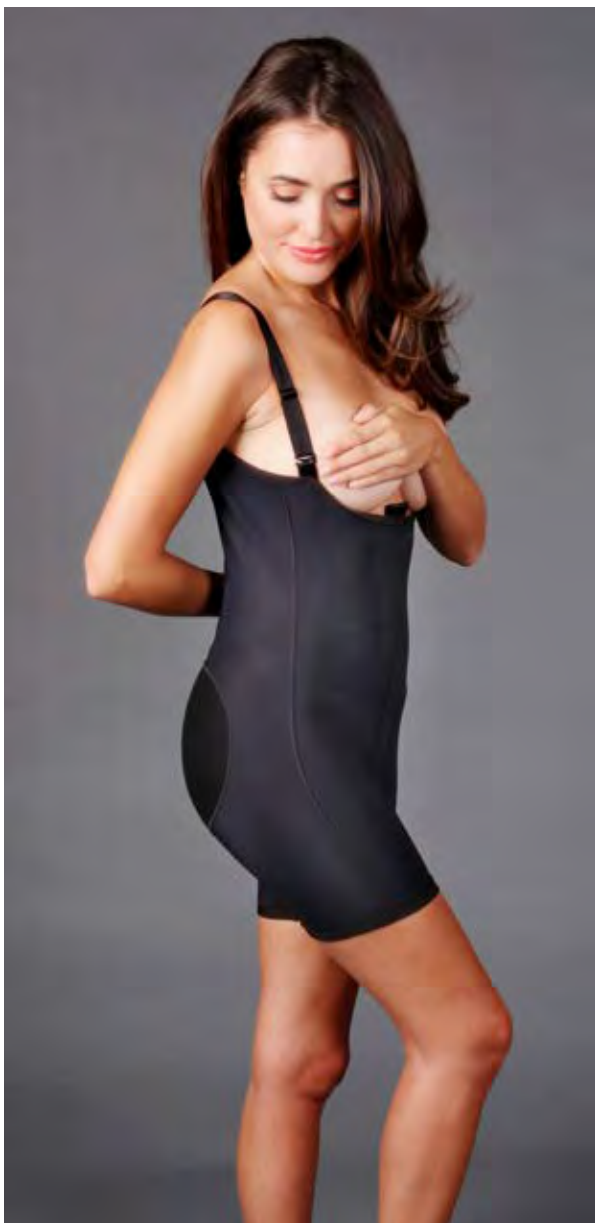
- Brazilian Butt Lift
- Natural Fat Transfer to the buttocks
- Butt Implants/Augmentation

Sculptures[®]
compression wear

Stage 2 Brazilian High Back Girdle

SC-32

Sizes: XS - 2XL



Size	Dress Size	Waist (in.)	Hips (in.)
XS	0-2	23-25	31-33
S	4-6	25-27	34-36
M	8-10	27-29	37-39
L	12-14	30-32	40-42
XL	14-16	33-36	43-45
2XL	18	37-40	45-48

Features

- Provides uninterrupted compression to the back, full abdomen and areas surrounding the buttocks
- Non-compressive cotton gluteal backing
- Features an open bust design with detachable Z-hook shoulder straps for increased adjustability
- Pull on design; no hook and eye or zippers
- Open crotch design for added convenience

Ideal for

- Brazilian Butt Lift
- Natural Fat Transfer to the buttocks
- Butt Implants/Augmentation
- Liposuction of the upper back

Colors

Black

Fabrics

SuperSilky

CAROMED®

Arm Garment Collection



Vest Style Arm Garment

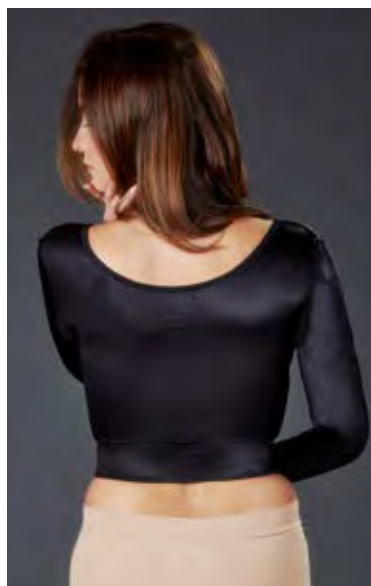
5-8030

Sizes: XS - 2XL

Arms



Size	Chest (in.)	Bicep (in.)
XS	30-32	9.5
S	32-34	10
M	36-38	11
L	40-42	12
XL	44-46	10
2XL	48-50	14.5



Features

- Provides compression to the upper back, arms and chest
- Seams placed on top of arm to avoid surgical site
- Shaped cups provide uniform compression
- Cotton fabric over the axilla area for breathability
- Padded hook & eye closure behind front zipper for easy application
- Full arm length

Ideal for

- Brachioplasty
- Lipoplasty of the upper arms
- Lipoplasty of anterior and lateral axillary folds or rolls

Colors

Black

Champagne

Fabrics

Satin/Spandex

Bolero Style Arm Garment

5-8035

Sizes: XS - 2XL



Size	Chest (in.)	Bicep (in.)
XS	30-32	9.5
S	32-34	10
M	36-38	11
L	40-42	12
XL	44-46	10
2XL	48-50	14.5



Colors

- Black
- Champagne

Fabrics

- Satin/Spandex

Features

- Provides focused compression to arms
- Cotton axillary coverage for breathability
- Adjustable hook and eye closures across the chest and back
- Seams placed on top of arm to avoid surgical site
- Full arm length coverage

Ideal for

- Brachioplasty
- Lipoplasty of the arms
- Lipoplasty of anterior and lateral axillary folds/rolls

Arm Compression Sleeves

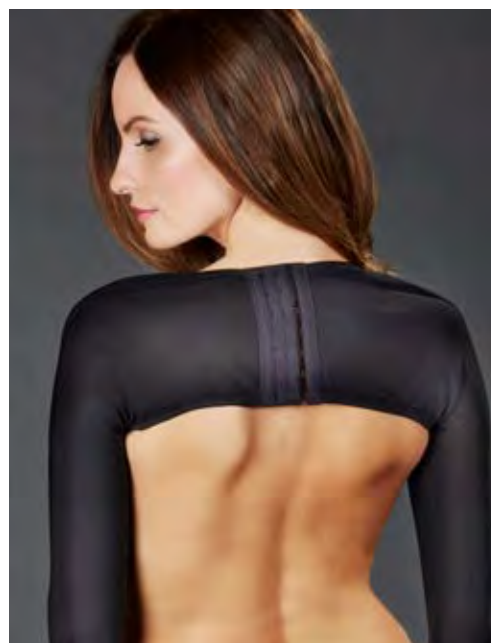
Arms

5-8040

Black - Sizes: 2XS-3XL
Champagne - Sizes: XS -3XL



Size	Chest (in.)	Bicep (in.)
2XS	28-30	9
XS	30-32	9.5
S	32-34	10
M	36-38	11
L	40-42	12
XL	44-46	13
2XL	48-50	14.5
3XL	51-54	16



Features

- Provides compression to the arms
- Adjustable hook & eye closure in the back
- Seam on top of the arm to avoid interference with surgical site
- Breathable, self-wicking SuperSilky fabric
- Full arm length coverage

Ideal for

- Liposuction of the arm and elbow
- Brachioplasty

Colors

Black

Champagne

Fabrics

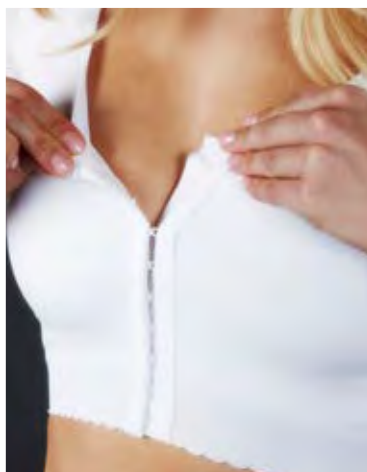
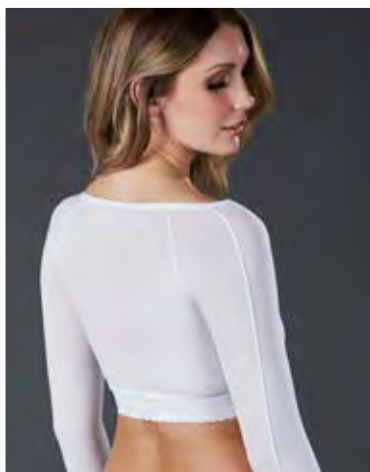
SuperSilky

Sports Bra with Sleeves

SC-475

Sizes: XS - 2XL

Size	Chest (in.)	Bicep (in.)
XS	30-32	9.5
S	32-34	10
M	36-38	11
L	40-42	12
XL	44-46	13
2XL	48-50	14.5



Colors

White

Fabrics

SuperSilky

Cotton

Features

- SuperSilky fabric provides universal compression to the upper back and arms
- Jersey knit fabric bra provides mid-weight compression to the breast
- Raglan sleeve design hugs the shoulders
- Arm seams placed on the top of the arm to avoid interference with the surgical site
- Front hook and eye closure

Ideal for

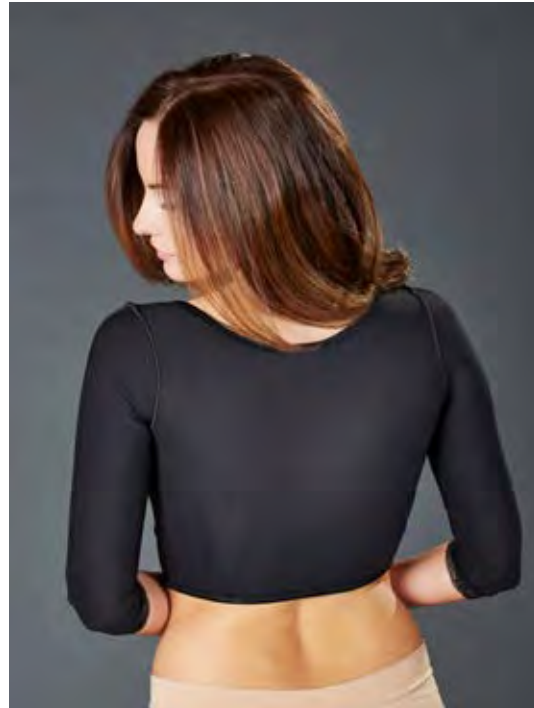
- Breast Augmentation
- Brachioplasty
- Liposuction of the arms and upper back

Sculptures[®]
compression wear

SC-495

Sizes: S - 2XL

Arms



Size	Chest (in.)	Bicep (in.)
S	32-34	10
M	36-38	11
L	40-42	12
XL	44-46	13
2XL	48-50	14.5

Features

- Provides full coverage and maximum support to the chest and upper back
- Double-ply, universal cup design
- Hook & eye shoulder straps for easy post-op inspection and adjustability
- Unique graded extra wide front bottom band design avoids interruption with incision sites
- Triple row hook & eye front closure for easy application and added adjustability

Ideal for

- Brachioplasty
- Breast Reconstruction
- Breast Reduction
- Mastopexy
- Liposuction of the axilla, arms and upper back
- Lipoplasty of anterior and lateral axillary folds/rolls

Colors

Black

Fabrics

Sateen

CAROMED®

Male Garment Collection



2-8003

Male Compression Vest

2-8003

Sizes: 2XS - 3XL

Male



Size	Inches		Centimeters	
	Chest	Waist	Chest	Waist
2XS	26-28	32	66-71.1	81.3
XS	30-32	34	76.2-81.3	86.4
S	34-36	36	86.4-91.4	91.4
M	38-40	38	96.5-101.6	96.5
L	42-44	40	106.7-111.8	101.6
XL	46-48	42	116.8-121.9	106.7
2XL	50-52	44	127-132.1	111.8
3XL	54-56	46	137.1-142.3	116.9

Features

- Provides maximum compression to the chest and upper back
- Double-ply front panels for added compression
- Velcro® shoulder straps for post-op inspection and adjustability
- Padded hook and eye under zipper closure for easy application

Ideal for

- Gynecomastia procedures
- Liposuction of the upper back
- FTM Top Surgery

Colors

Black

Beige

Fabrics

Powerknit

Male Compression Vest

SC-100

Sizes: S/M, L/XL

Size	Chest	
	Inches	Centimeters
S/M	24 - 48	61.0 - 121.9
L/XL	44 - 70	111.8 - 177.8



Colors

Black

White

Fabrics

SuperSilky

Features

- Provides maximum radial compression to the chest, back and abdomen
- Velcro shoulder straps for easy post-op inspection and adjustability
- Padded front zipper closure for easy application
- Full-length bilateral Velcro closure to offer maximum side adjustment capabilities. Patients can continue to tighten the garment as they continue to heal and reduce in size

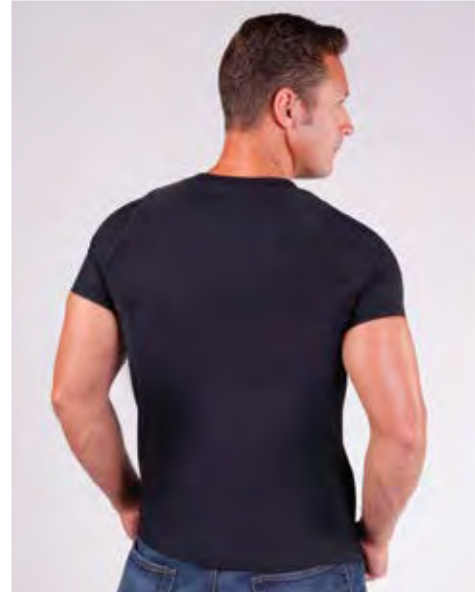
Ideal for

- 3

Sculptures[®]
compression wear

SC-175

Sizes: S - 2XL



Size	Chest (in.)	Waist (in.)
S	36 - 38	32 - 35
M	39 - 42	34 - 36
L	43 - 46	37 - 39
XL	47 - 50	40 - 42
2XL	51 - 54	43 - 46

Features

- Provides maximum radial compression to the chest, upper back and flanks, and upper and lower abdomen
- Double-ply front panel for added compression
- Uninterrupted surface compression with the absence of hook and eye or zippers
- Tapered design provides a contoured fit

Ideal for

- Gynecomastia procedures
- Liposuction of the upper body
- Extended post-op recovery wear

Colors

Black

Fabrics

SuperSilky

Male Abdominoplasty Garment

Sculptures[®]
compression wear

SC-205

Sizes: S - 3XL



Size	Chest (in.)	Waist (in.)
S	36 - 38	32 - 35
M	39 - 42	34 - 36
L	43 - 46	37 - 39
XL	47 - 50	40 - 42
2XL	51 - 54	43 - 46
3XL	55 - 58	47 - 51

Colors

Black

Fabrics

SuperSilky

Features

- Provides maximum compression to the abdomen and lower flanks
- Lightweight, breathable fabric
- Re-closable Velcro crotch flap for added convenience and scrotal support
- Padded hook & eye closure beneath bilateral separating zippers
- 4" waistband for a high fit on the abdomen

Ideal for

- Abdominoplasty procedures
- Liposuction of the abdomen and flanks

Male Compression Girdle

Male

Order by Length:

4-8100 Below the Knee

4-8112 Above the Knee

Sizes: XS - 2XL



Size	Waist	
	Inches	Centimeters
XS	26-27	66-68.6
S	28-30	71.1-76.2
M	32-34	81.3-86.4
L	36-38	91.4-96.5
XL	40-42	101.6-106.7
2XL	44-46	111.8-116.8

Features

- Provides maximum radial compression to the abdomen and lower body
- Front and back reinforcement panels for added compression in key areas
- 4" anti-roll waistband to secure the garment in place
- Open crotch design for added convenience

Ideal for

- Liposuction of the abdomen and lower body
- Abdominoplasty

Colors

Black

Fabrics

Powerknit



SC-150

Sizes: S - 3XL



Size	Chest (in.)	Waist (in.)
S	36 - 38	32 - 35
M	39 - 42	34 - 36
L	43 - 46	37 - 39
XL	47 - 50	40 - 42
2XL	51 - 54	43 - 46
3XL	55 - 58	47 - 51

Features

- Sateen material provides maximum compression to the full upper and lower abdomen, back, flanks, hips and thighs
- Self-wicking, breathable fabric
- Padded hook & eye beneath one side zipper closure for an uninterrupted surface over the abdomen
- Flat external outside seams
- Open crotch design
- Front reinforcement panel for added compression
- Adjustable shoulder straps with Velcro[®] closure

Ideal for

- Liposuction of the full upper and lower abdomen, upper and lower back, flanks, hips and thighs
- Abdominoplasty procedures
- Gynecomastia procedures

Colors

Black

Beige

Fabrics

Sateen

CAROMED®

Surgical Supplies



7-8004

Cold Therapy

7-8004 Caromed 4"dia. Cold Pack w/ Fabric Back

Colors: Black Glitter, Blue, Clear, Gold Glitter, Lime, Pink Glitter, Plum, Silver Glitter, Strawberry, Tangerine, White Glitter

Features

- One soft-sided surface that shields the skin from direct contact with frozen pack
- Gel remains pliable when cold which allows for greater contouring to the patient's skin
- Gel packs are customizable to become your perfect 'frozen' business card when personalized with your practice logo
- Convenient, comfortable and economical-the ultimate patient-friendly cold therapy product
- Reusable

Ideal for

- Post-op recovery cold therapy to reduce swelling
- Great size for use after injections and facial cosmetic procedures
- Post-op recovery cold therapy for Blepharoplasty
- Post-op recovery for breast surgeries
- Pediatric facial and oral surgeries
- TMJ surgery or disease



Pink Glitter

White Glitter

Gold Glitter

Silver Glitter

Black Glitter



Strawberry

Plum

Clear

Blue

Tangerine

Lime

Customization

Caromed is proud to offer a variety of customization options to help your gel packs perfectly reflect your corporate image. Choose from our Full Color Label or One Color Imprint (ink options include white, black, silver, and gold). Contact our Customer Care Team, (800) 948-1938, today and let our Graphics Department take your cold therapy products to a new level.



Photo Panties



7-8500 Back



7-8500 Front



7-8500 Front

7-8500 Female Full Seat Cloth Disposable Photo Panties
Colors: Black, Blue, White - (50/bag)

7-8500XL Female Full Seat XL Cloth Disposable Photo Panties
Colors: Black, Blue, White - (25/bag)

7-8505 Female Thong Cut Cloth Disposable Photo Panties
Colors: Black, Blue, White - (50/bag)

7-8570 Male Brief Cloth Disposable Photo Panties
Colors: Black, White - (25/bag)

Features

- Designed for pre-op & post-op photography and consultation
- Soft, poly-blend fabric
- Elastic waistband
- Modest design exposes hips and thighs without distorting body contour
- Individually bagged for added convenience and hygiene

Ideal for

- Pre/Post-operative photography
- Pre-operative marking
- Post-operative inspection



7-8570 Front



7-8505 Back

SC-810 Sculptures Liposuction Foam® Sheets
(12/case) 8" x 10.5" Sheets

SC-815 Sculptures Liposuction Foam® Roll
15' Roll (21" width)

Features

- Soft medical grade polyurethane foam
- Provides uniform compression resulting in an even, smooth finish to the skin
- Intensifies compression under garments to help reduce bruising
- Absorbency qualities of drainage fluids (approximately 1 L fluid)
- Enhances patient comfort
- Can be cut to a desired shape and size and then easily inserted between sterile dressing and the compression garment

Ideal for

- Traditional liposuction
- Tumescence technique liposuction
- Chin and neck contouring
- Assistance with bruising and swelling



CAROMED®

Custom Garments

The precise fit of a compression garment requires specific measurements. The following guidelines provide you with needed measurements and how-to-measure graphs. All custom orders must be faxed to 888-311-7596 or emailed to sales@caromed.us to ensure accuracy.

Custom Girdles and Compression Suits

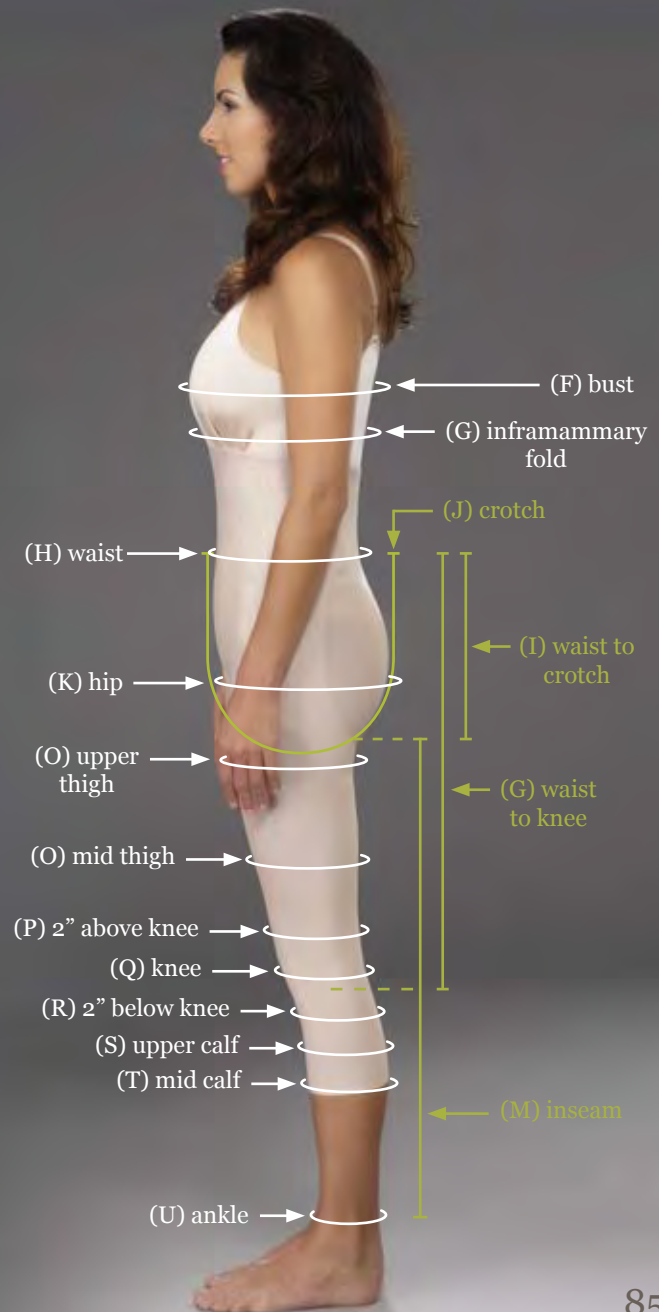
Record the following measurements:

Circumferential Measurements

- (F) bust
- (G) inframammary fold
- (H) waist
- (K) hip
- (N) upper thigh
- (O) mid thigh
- (P) 2" above knee
- (Q) knee
- (R) 2" below knee
- (S) upper calf
- (T) mid calf
- (U) ankle

Lengths

- (I) waist to crotch
- (J) crotch
- (L) waist to knee
- (M) inseam



Garment Care Instructions

When applying and caring for your Caromed compression garment at home, please follow these instructions carefully. Your garment is a medical device, designed and manufactured to help provide you with optimal cosmetic results.

Caromed recommends that someone assist you with your at-home garment application. Again, follow the instructions one step at a time, and take your time.

Application of your Caromed garment is a step-by-step process. Caromed garments are designed for ease of application; however, since this garment is a medical device, we ask that you follow all instructions carefully for best results.

HELPFUL TIPS

To apply your Caromed garment at home: If you have just showered, make certain that you are completely dry before applying your Caromed garment. Assume a seated position on a bed or comfortable chair. If at any time during the application of your girdle, you become fatigued, please take a minute to rest.

GIRDLES

While seated, fasten the girdle up to the knee area. Secure both the hook & eyes closures and zippers.

Remain seated, step into the girdle and position the girdle properly, gently pulling the girdle into place. While standing propped near your chair or bed, pull the girdle up making sure to position the crotch opening as far up as possible.

Fasten the remaining hook & eye closures on one side only. Carefully pull up the zipper. Now fasten the hook & eye closures on the remaining side. This side will be somewhat more difficult to secure and we recommend that someone be present to provide assistance.

After the hook & eye closures are secured, carefully zip up this side.

PLEASE USE EXTRA CAUTION TO AVOID CATCHING THE ZIPPER IN THE INNER FACING.

Important: If the zipper becomes snagged – **STOP IMMEDIATELY. DO NOT** attempt to force the zipper in any direction. Remove the entire garment completely. This alleviates the tension placed on the zipper. You now will be able to gently work with the zipper until it is freed from the facing.

Urination: Caromed recommends that all female patients purchase a small, flexible plastic funnel to position close to the perineum when voiding. This will prevent accidental splashing or spraying of the garment. Voiding in the standing position will probably be more comfortable the first few days following surgery.

Elimination: We recommend that you unzip one side, drop the flap, hold securely to one side and elimination can be accomplished quite easily without soiling the garment.

Laundering: Caromed recommends that you hand wash your Caromed garment in lukewarm water with a mild soap or detergent, then air dry. Please do not dry your garment in an electric or gas dryer as this may ruin the garment.

MOST PATIENTS REQUIRE TWO GARMENTS IN ORDER TO HAVE A FRESHLY LAUNDERED ONE AVAILABLE

To remove bloodstains, simply soak your garment in a basin of cool water to which 1/4 cup of peroxide has been added. Then launder and let air-dry.

Take Two

One to wear
One to wash

Because of occasional bleeding after surgery, purchasing two garments allows one to be worn while the other is washed.





CAROMED[®]

recover beautifully

www.caromed.us Phone: (800) 948-1938 Fax: (888) 311-7596 Email: sales@caromed.us